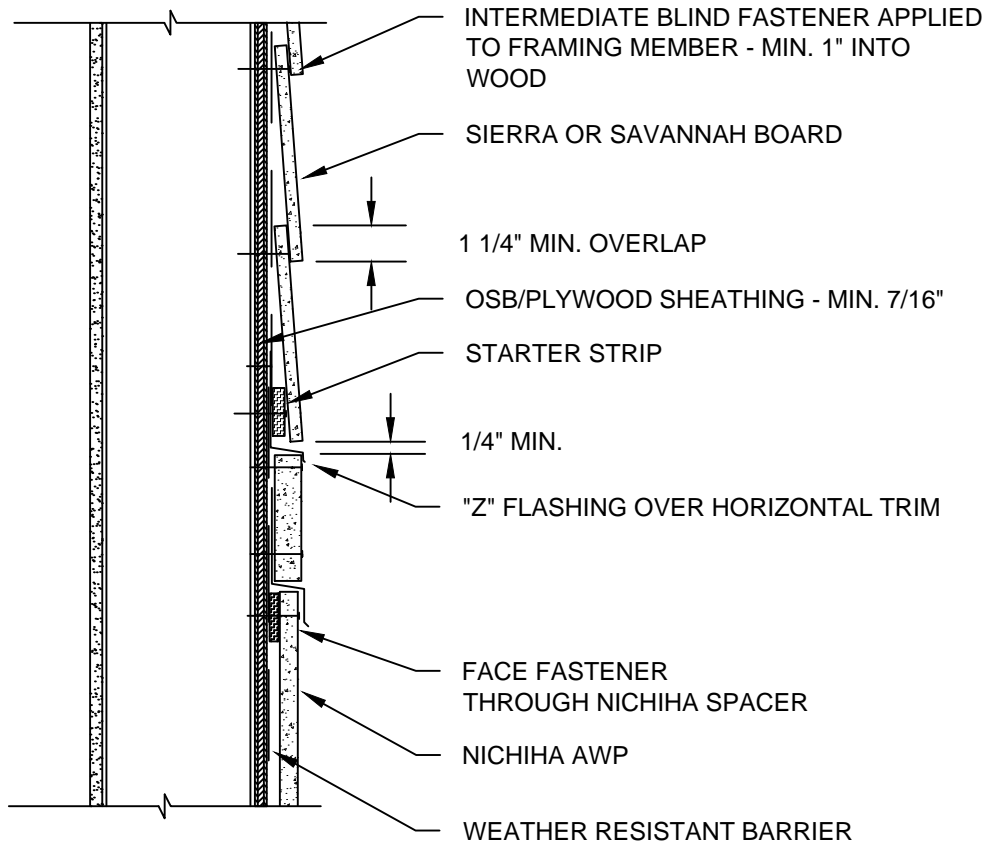


NOTES:

1. THIS CONCEPTUAL DETAIL IS A GUIDE FOR INSTALLATION OF NICHIIA PRODUCTS. ARCHITECTS/ENGINEERS/CONTRACTORS ARE RESPONSIBLE FOR SUCCESSFUL APPLICATION WHICH DEPENDS UPON SUBSTRATE DESIGN AND CONSTRUCTION BUILT IN ACCORDANCE WITH BEST PRACTICES AND LOCAL BUILDING CODES.
2. SHEATHING REPRESENTED HERE IS 1/2" PLYWOOD OR 7/16" OSB (IF USING OTHER THICKNESSES ADJUST ACCORDINGLY).
3. BLIND FASTENERS MUST BE MIN. 1" FROM END OF BOARD FOR BUTT JOINTS AND CORNERS AND 1" FROM TOP EDGE. MUST USE #8 FULLY THREADED SCREWS AT BOARD ENDS.
4. CUT ENDS OF BOARD MUST BE SEALED WITH PRIMER OR PAINT.
5. STARTER STRIP TO BE A CUT PIECE OF SHAKE/SMOOTH BOARD, FS1010 1/2" SPACER, OR 1/2" FIBER CEMENT, PVC OR PRESSURE TREATED LUMBER.



WOOD STANDARD HORIZONTAL/PRODUCT TRANSITION JOINT  
SIERRA SHAKE/SAVANNAH SMOOTH DETAIL

SCALE: 1/2" = 1'-0"