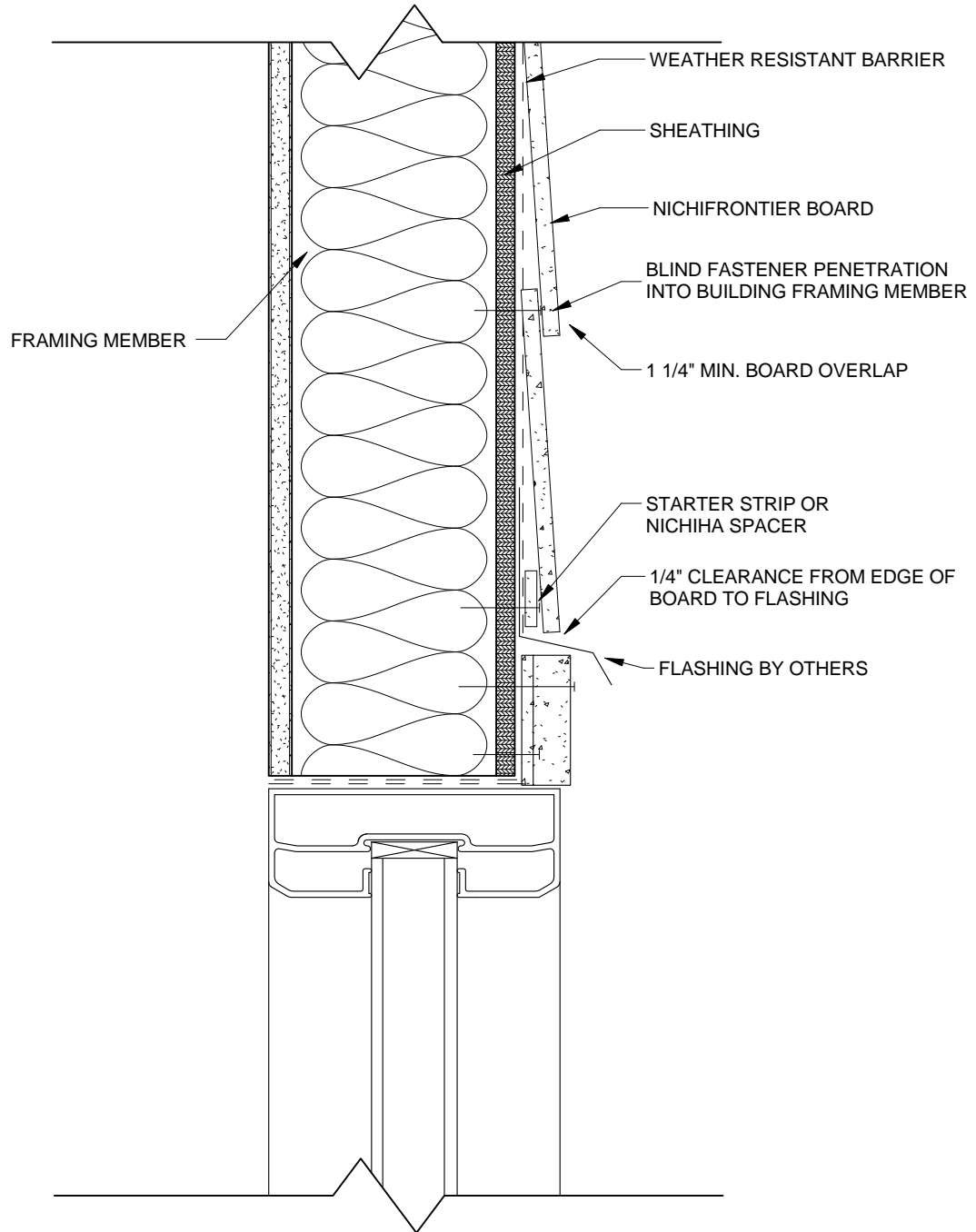


NOTES:

1. THIS CONCEPTUAL DETAIL IS A GUIDE FOR INSTALLATION OF NICHIIHA PRODUCTS. ARCHITECTS/ENGINEERS/CONTRACTORS ARE RESPONSIBLE FOR SUCCESSFUL APPLICATION WHICH DEPENDS UPON SUBSTRATE DESIGN AND CONSTRUCTION BUILT IN ACCORDANCE WITH BEST PRACTICES AND LOCAL BUILDING CODES.
2. SHEATHING (REPRESENTED HERE IS 1/2" PLYWOOD OR 7/16" OSB (IF USING OTHER THICKNESSES ADJUST ACCORDINGLY).
3. BLIND FASTENERS MUST BE MIN. 1/2" FROM END OF BOARD FOR BUTT JOINTS AND CORNERS AND 1" FROM TOP EDGE.
4. CUT ENDS OF BOARD MUST BE PAINTED OR SEALED.
5. STARTER STRIP TO BE A CUT PIECE OF NICHIBOARD, FS1005 SPACER, FIBER CEMENT, PVC OR PRESSURE TREATED LUMBER ONLY.
6. SHOWN HERE IS 5/16" BUILD OUT WITH 1" NICHII TRIM. OTHER COMBINATIONS MAY BE APPROPRIATE FOR YOUR SPECIFIC APPLICATION.



WOOD STANDARD NICHIFRONTIER WINDOW HEADER WITH FC TRIM DETAIL
SCALE: 3" = 1'-0"