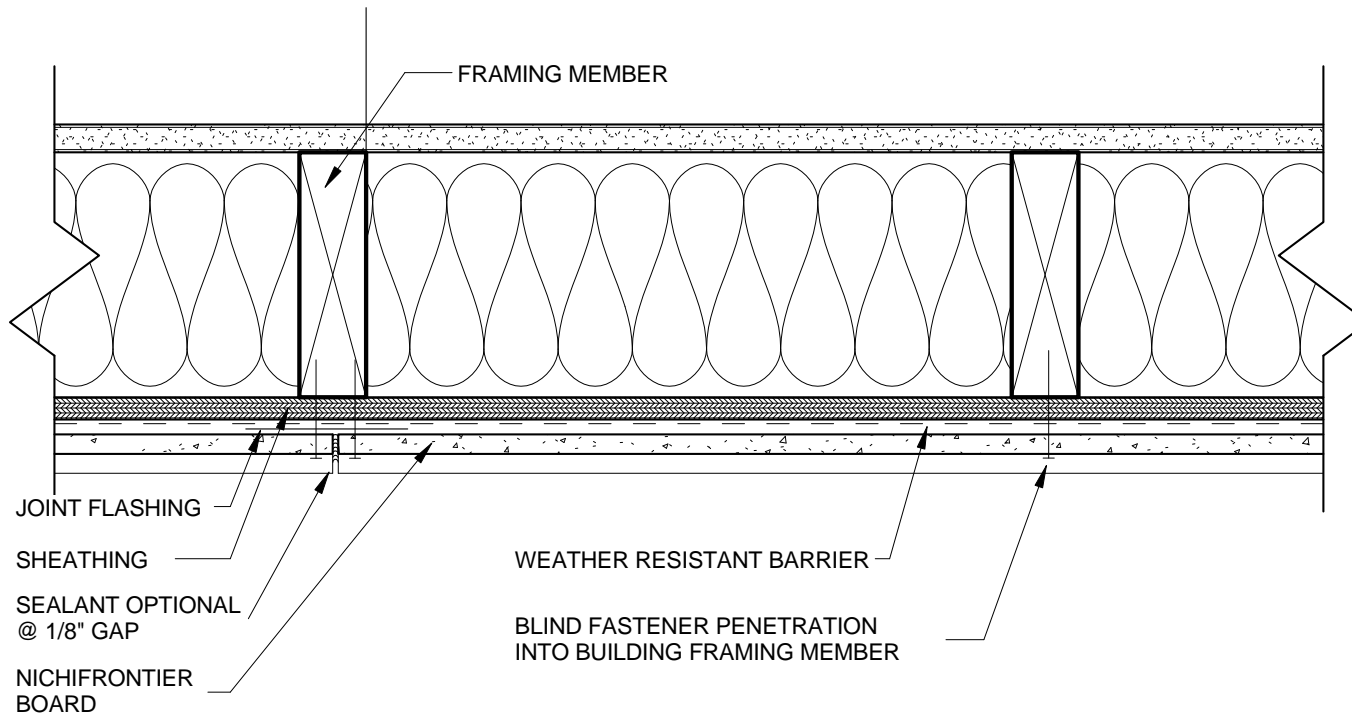


NOTES:

1. THIS CONCEPTUAL DETAIL IS A GUIDE FOR INSTALLATION OF NICHIIHA PRODUCTS. ARCHITECTS/ENGINEERS/CONTRACTORS ARE RESPONSIBLE FOR SUCCESSFUL APPLICATION WHICH DEPENDS UPON SUBSTRATE DESIGN AND CONSTRUCTION BUILT IN ACCORDANCE WITH BEST PRACTICES AND LOCAL BUILDING CODES.
2. SHEATHING (REPRESENTED HERE IS 1/2" PLYWOOD OR 7/16" OSB (IF USING OTHER THICKNESSES ADJUST ACCORDINGLY).
3. BLIND FASTENERS MUST BE MIN. 1/2" FROM END OF BOARD FOR BUTT JOINTS AND CORNERS AND 1" FROM TOP EDGE.
4. ALL BOARD ENDS MUST BE ATTACHED ONTO VERTICAL FRAMING MEMBERS.
5. CUT ENDS OF BOARD MUST BE PAINTED OR SEALED.
6. JOINT FLASHING IS REQUIRED AT BUTT JOINT. REFER TO INSTALLATION GUIDELINES FOR DETAILS.



WOOD STANDARD NICHIFRONTIER EXPANSION JOINT DETAIL

SCALE: 3" = 1'-0"