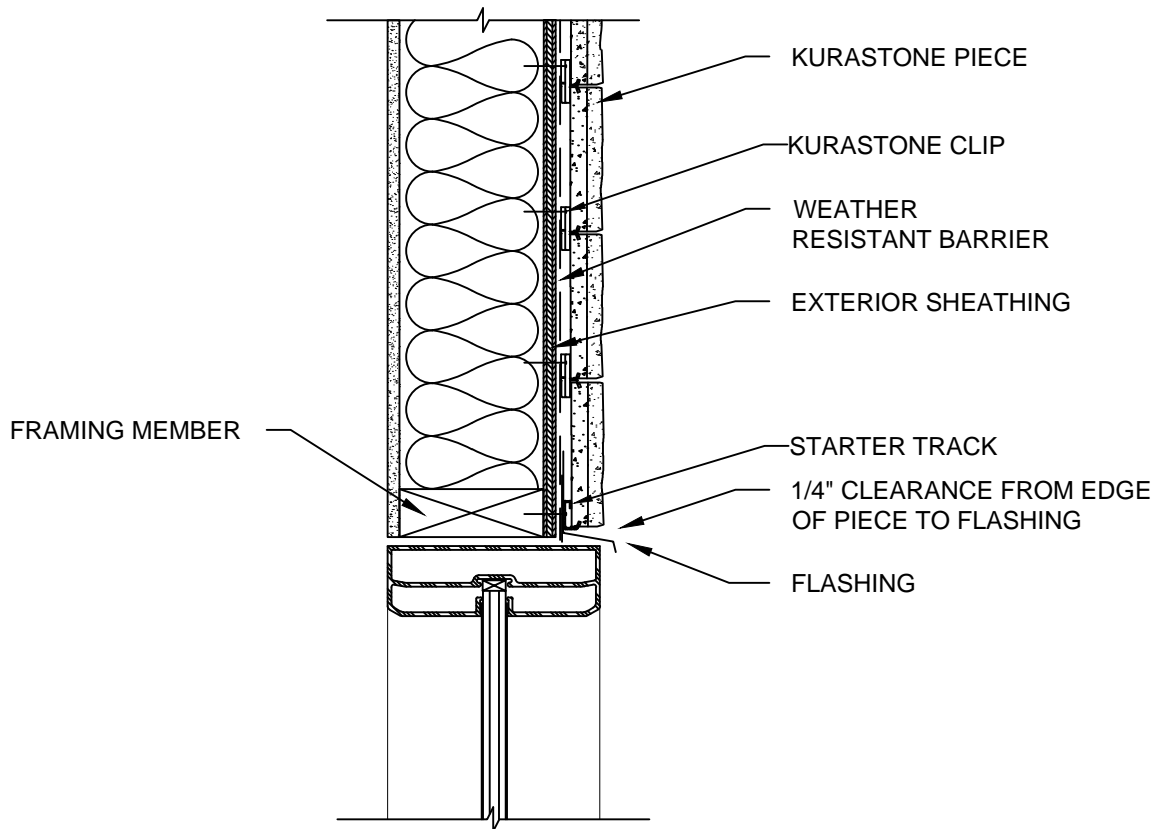


NOTES:

1. THIS CONCEPTUAL DETAIL IS A GUIDE FOR INSTALLATION OF NICHHA PRODUCTS. ARCHITECTS/ENGINEERS/CONTRACTORS ARE RESPONSIBLE FOR SUCCESSFUL APPLICATION WHICH DEPENDS UPON SUBSTRATE DESIGN AND CONSTRUCTION BUILT IN ACCORDANCE WITH BEST PRACTICES AND LOCAL BUILDING CODES.
2. STRUCTURAL SHEATHING REQUIRED FOR KURASTONE INSTALLATION (REPRESENTED HERE IS 1/2" PLYWOOD OR 7/16" OSB (IF USING OTHER THICKNESSES ADJUST ACCORDINGLY)).
3. FLASHING MUST BE CORROSION RESISTANT, GALVANIZED, COATED ALUMINUM, OR VINYL.



10MM - WOOD STANDARD KURASTONE
WINDOW HEADER DETAIL

SCALE: 3" = 1'-0"