

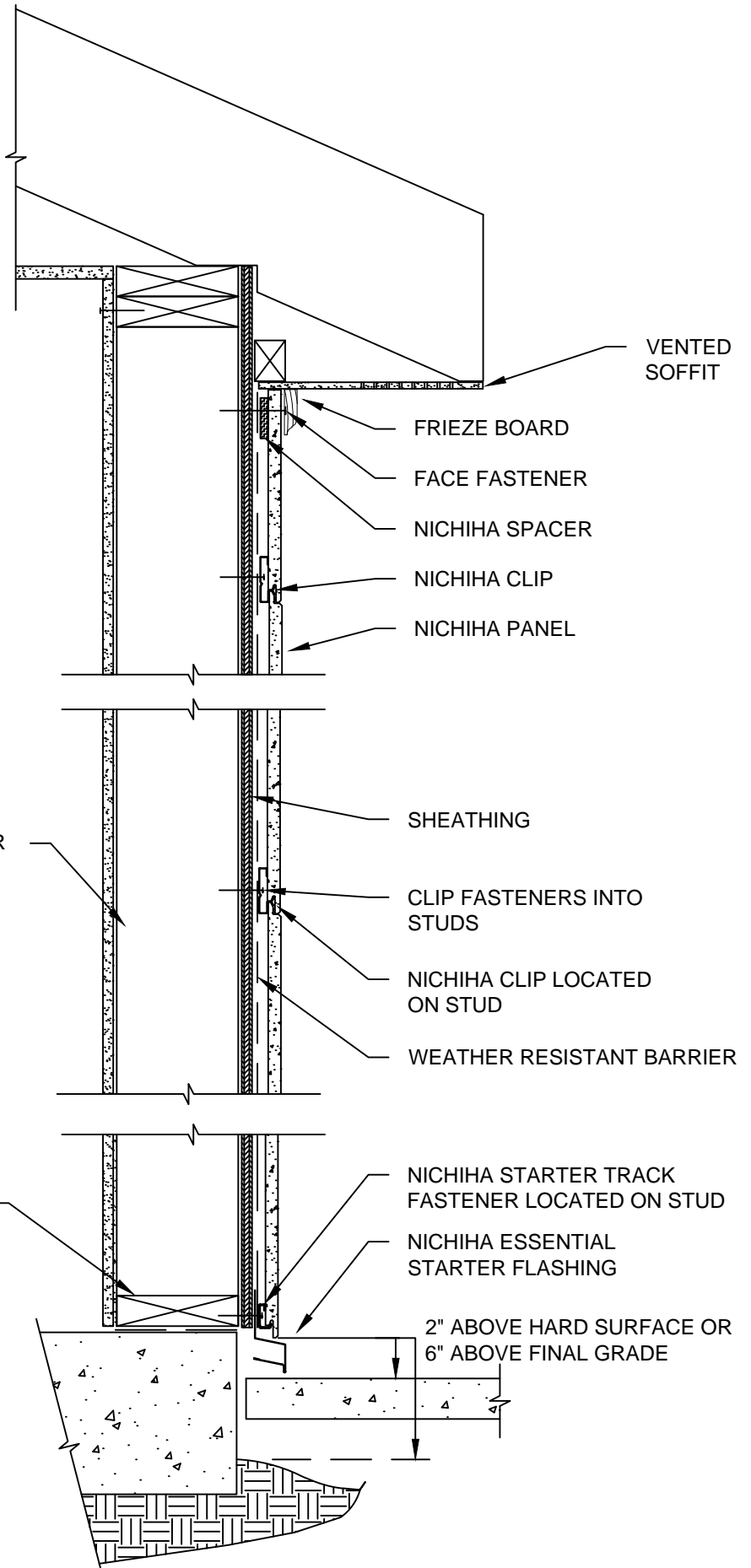
NOTES:

1. THIS CONCEPTUAL DETAIL IS A GUIDE FOR INSTALLATION OF NICHHA PRODUCTS. ARCHITECTS/ENGINEERS/CONTRACTORS ARE RESPONSIBLE FOR SUCCESSFUL APPLICATION WHICH DEPENDS UPON SUBSTRATE DESIGN AND CONSTRUCTION BUILT IN ACCORDANCE WITH BEST PRACTICES AND LOCAL BUILDING CODES.
2. SHEATHING REPRESENTED HERE IS 1/2" PLYWOOD OR 7/16" OSB. IF USING OTHER THICKNESSES ADJUST ACCORDINGLY.
3. NICHHA PANEL REPRESENTED HERE IS 5/8" NICHHA PRODUCT, ADJUST ACCORDINGLY FOR OTHER NICHHA PRODUCT THICKNESSES.

TOP OF PANEL
DETAIL

SUPPORT CLIP
DETAIL

STARTER TRACK
DETAIL



10 mm WOOD STANDARD 6' & 10' HORIZONTAL PANEL TYPICAL WALL
DETAIL