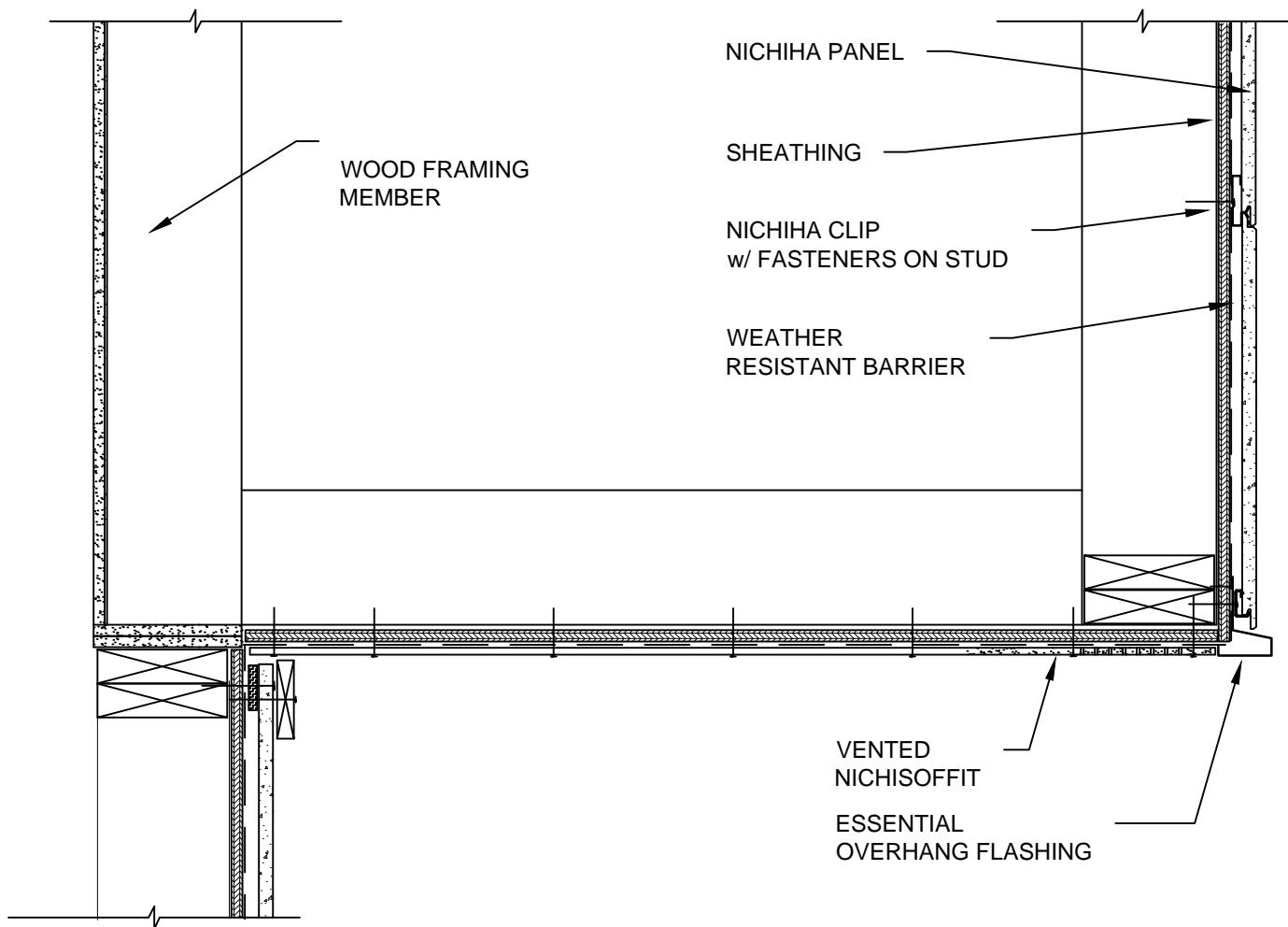


NOTES:

1. THIS CONCEPTUAL DETAIL IS A GUIDE FOR INSTALLATION OF NICHIIHA PRODUCTS. ARCHITECTS/ENGINEERS/CONTRACTORS ARE RESPONSIBLE FOR SUCCESSFUL APPLICATION WHICH DEPENDS UPON SUBSTRATE DESIGN AND CONSTRUCTION BUILT IN ACCORDANCE WITH BEST PRACTICES AND LOCAL BUILDING CODES.
2. NICHIIHA PANEL REPRESENTED HERE IS 5/8" NICHIIHA PRODUCT, ADJUST ACCORDINGLY FOR OTHER NICHIIHA PRODUCT THICKNESSES.
3. SHEATHING REPRESENTED HERE IS 1/2" PLYWOOD OR 7/16" OSB (IF USING OTHER THICKNESSES ADJUST ACCORDINGLY).
4. INSIDE SOFFIT RECOMMEND PROVIDING SLIGHT SLOPE DOWNWARDS TOWARDS TRIM TO EVACUATE MOISTURE.
5. NICHISOFFIT FACE FASTENED INTO FRAMING AT 8" O.C.



10MM - WOOD STANDARD 6' & 10' HORIZONTAL PANEL & NICHISOFFIT DETAIL

SCALE: 1/2" = 1'-0"