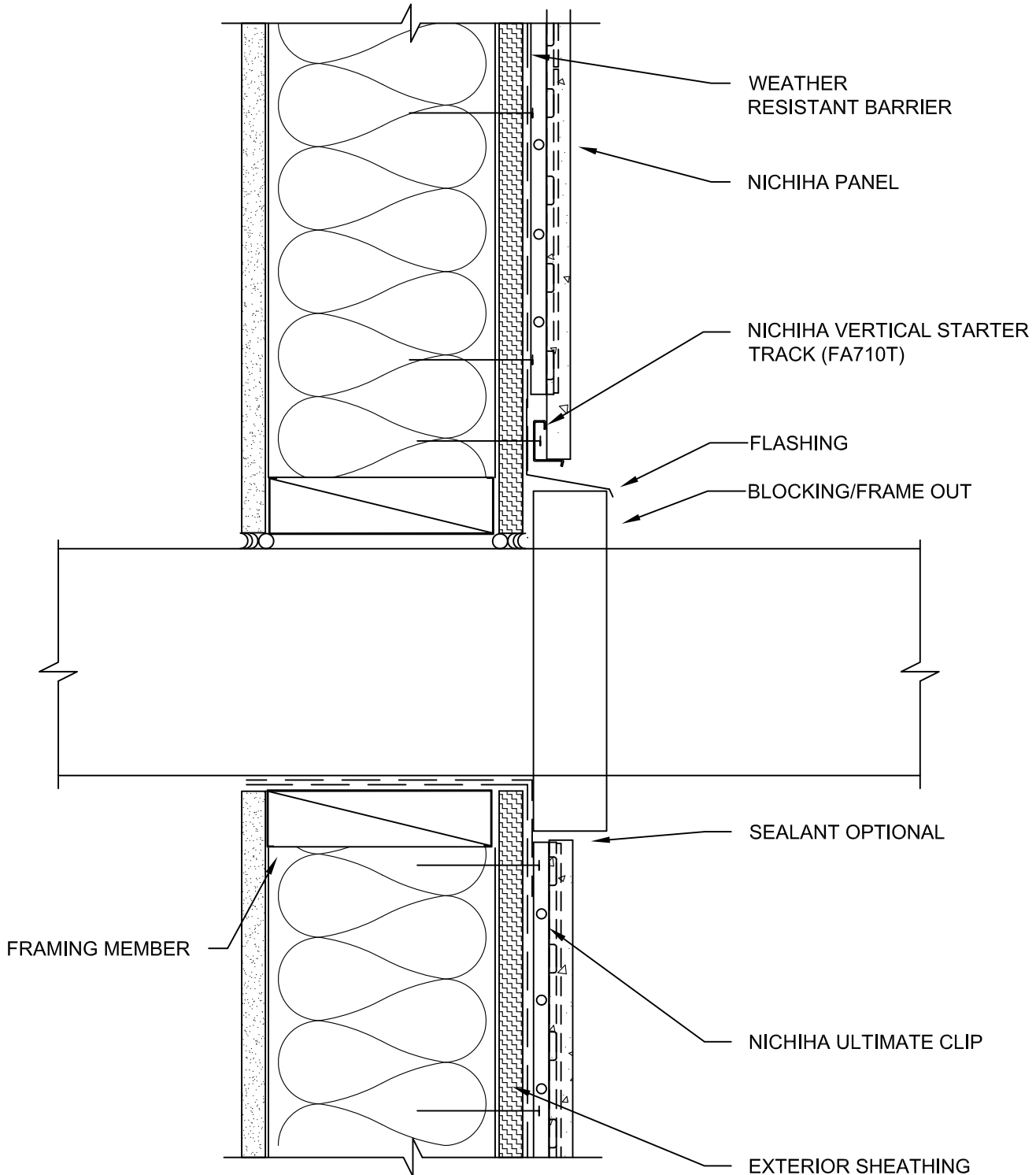


NOTES:

1. THIS CONCEPTUAL DETAIL IS A GUIDE FOR INSTALLATION OF NICHHA PRODUCTS. ARCHITECTS/ENGINEERS/CONTRACTORS ARE RESPONSIBLE FOR SUCCESSFUL APPLICATION WHICH DEPENDS UPON SUBSTRATE DESIGN AND CONSTRUCTION BUILT IN ACCORDANCE WITH BEST PRACTICES AND LOCAL BUILDING CODES.
2. METAL FRAMING MEMBERS MUST BE A MINIMUM OF 18 GA.
3. FOR THIS APPLICATION ONLY USE NICHHA 10', 5/8" PANEL SET VERTICALLY.
3. SHEATHING: 7/16" OR THICKER APA RATED OSB OR PLYWOOD REQUIRED WITH STUD SPACING OTHER THAN 45.5 CM (17-7/8") O.C.
4. FOR PENETRATIONS GREATER THAN 1.5", BLOCK/FRAME OUT THE OPENING. SMALLER PENETRATIONS MAY BE CUT THROUGH PANEL AND SEALED WITH POLYURETHANE SEALANT.



10MM - STANDARD 10' VERTICAL PANEL - 6 X 6 PENETRATION SECTION DETAIL

SCALE: 3" = 1'-0"