

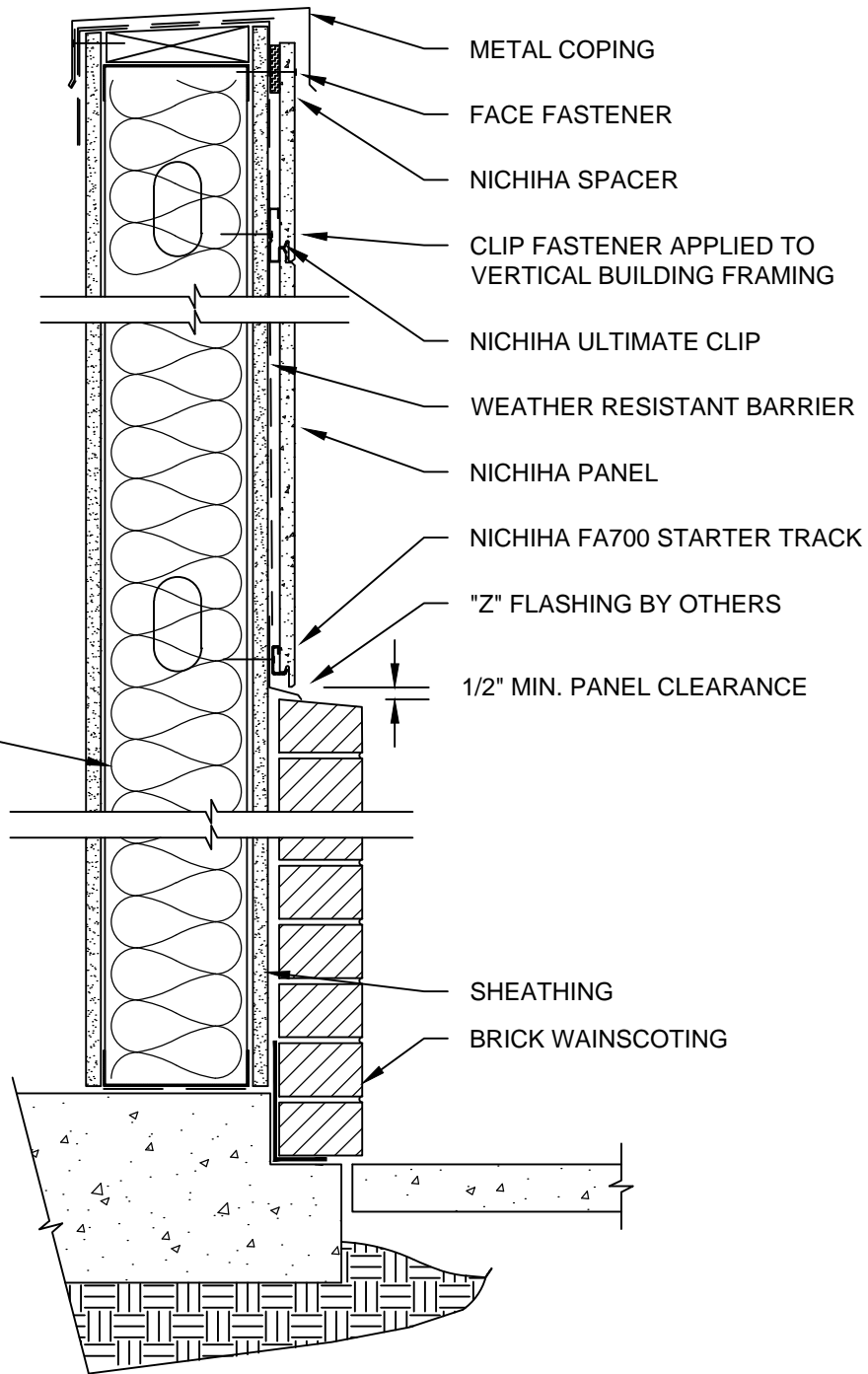
NOTES:

1. THIS CONCEPTUAL DETAIL IS A GUIDE FOR INSTALLATION OF NICHIIHA PRODUCTS. ARCHITECTS/ENGINEERS/CONTRACTORS ARE RESPONSIBLE FOR SUCCESSFUL APPLICATION WHICH DEPENDS UPON SUBSTRATE DESIGN AND CONSTRUCTION BUILT IN ACCORDANCE WITH BEST PRACTICES AND LOCAL BUILDING CODES.
2. NICHIIHA 16MM (5/8") PANEL REPRESENTED HERE. ADJUST ACCORDINGLY FOR OTHER THICKNESSES.
3. SHEATHING SHOWN IS 5/8" GYPSUM. MAKE ADJUSTMENTS FOR 7/16" OR THICKER APA RATED OSB OR PLYWOOD.
4. METAL FRAMING MEMBERS MUST BE A MINIMUM OF 18 GA.

**TOP OF PANEL
DETAIL**

**STARTER
TRACK DETAIL**

METAL FRAMING
MEMBER



**10mm - METAL STUD PANEL WITH MASONRY
TRANSITION WALL & PARAPET DETAIL**

SCALE: 1 1/2" = 1'-0"