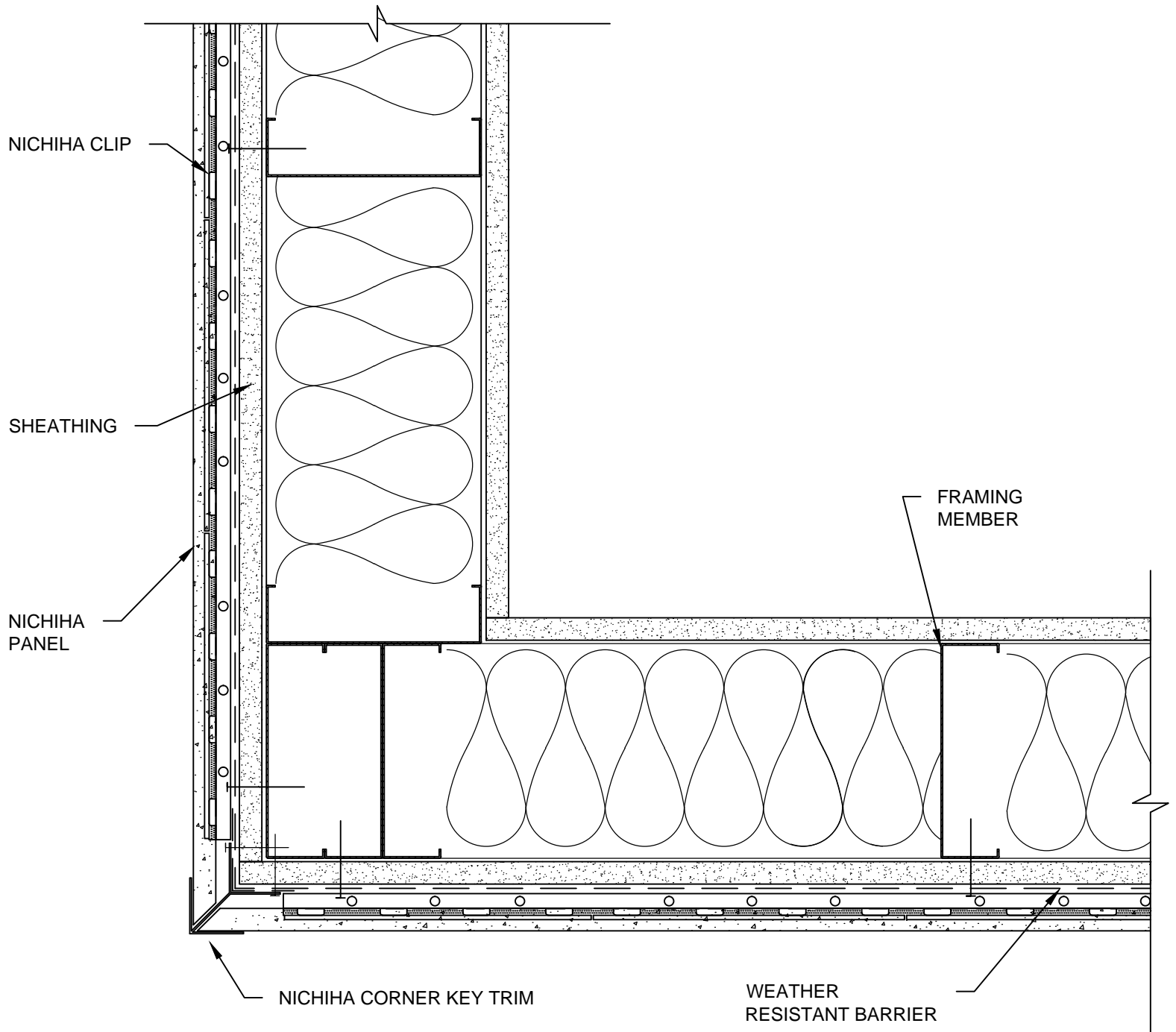


NOTES:

1. THIS CONCEPTUAL DETAIL IS A GUIDE FOR INSTALLATION OF NICHIIA PRODUCTS. ARCHITECTS/ENGINEERS/CONTRACTORS ARE RESPONSIBLE FOR SUCCESSFUL APPLICATION WHICH DEPENDS UPON SUBSTRATE DESIGN AND CONSTRUCTION BUILT IN ACCORDANCE WITH BEST PRACTICES AND LOCAL BUILDING CODES.
2. METAL FRAMING MEMBERS MUST BE A MINIMUM OF 18 GA.
3. NICHIIA PANEL REPRESENTED HERE IS 5/8" NICHIIA PRODUCT, ADJUST ACCORDINGLY FOR OTHER NICHIIA PRODUCT THICKNESSES.
4. SHEATHING REPRESENTED HERE IS 5/8" EXTERIOR GYPSUM WALLBOARD, IF USING OSB OR PLYWOOD ADJUST ACCORDINGLY.
5. MITER CUT PANEL EDGES TO TERMINATE/BUTT TO CENTER FLANGE OF CORNER KEY TRIM IN MODERATE CONTACT.



10MM - METAL STUD - PANEL OUTSIDE CORNER DETAIL - CORNER KEY TRIM

SCALE: 3" = 1'-0"