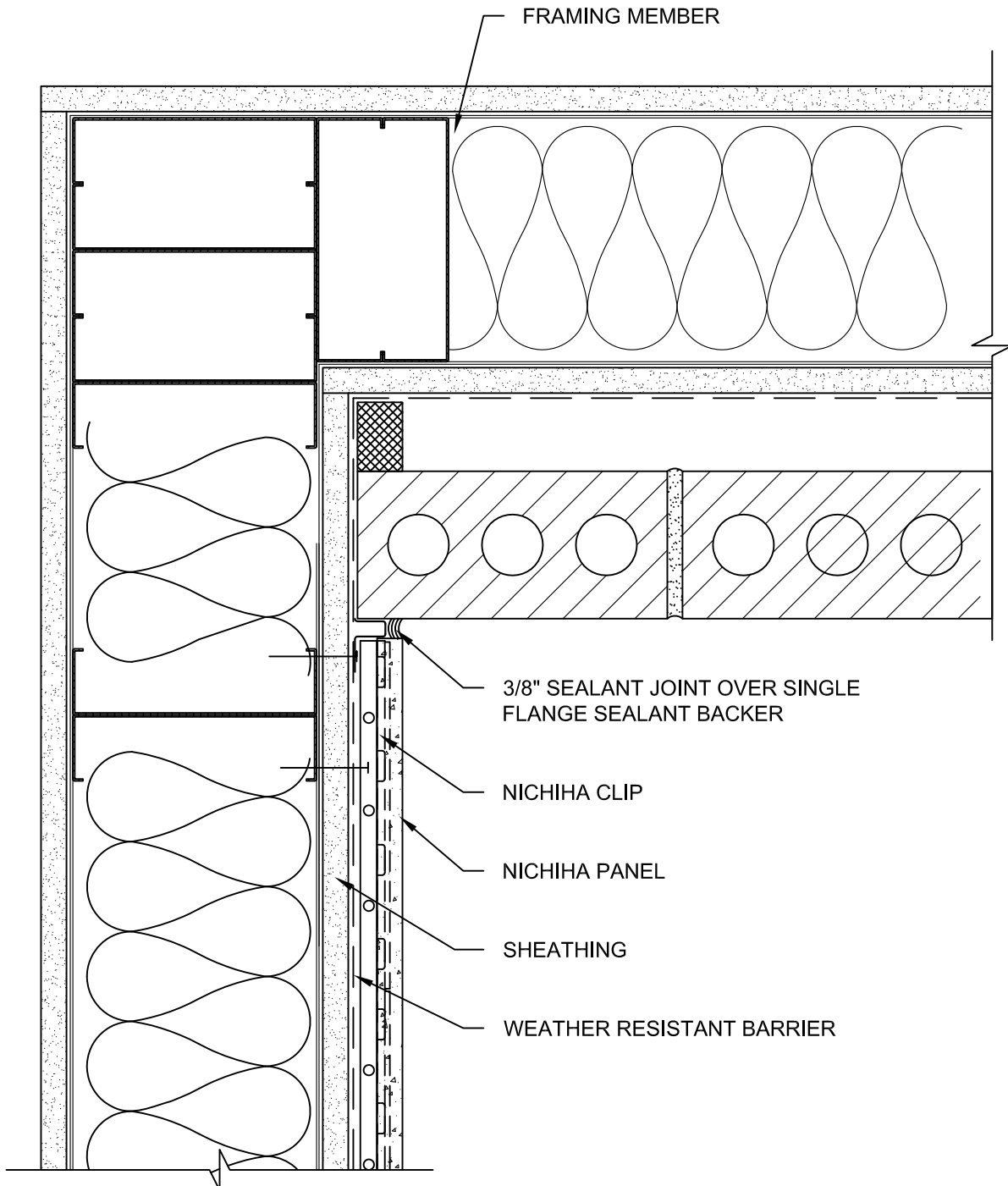


NOTES:

1. THIS CONCEPTUAL DETAIL IS A GUIDE FOR INSTALLATION OF NICHIIHA PRODUCTS. ARCHITECTS/ENGINEERS/CONTRACTORS ARE RESPONSIBLE FOR SUCCESSFUL APPLICATION WHICH DEPENDS UPON SUBSTRATE DESIGN AND CONSTRUCTION BUILT IN ACCORDANCE WITH BEST PRACTICES AND LOCAL BUILDING CODES.
2. NICHIIHA PANEL REPRESENTED HERE IS 5/8" NICHIIHA PRODUCT, ADJUST ACCORDINGLY FOR OTHER NICHIIHA PRODUCT THICKNESSES.
3. SHEATHING REPRESENTED HERE IS 5/8" EXTERIOR GYPSUM WALLBOARD, IF USING OSB OR PLYWOOD ADJUST ACCORDINGLY.
4. ADD STUD, BLOCKING OR STUD EXTENDER AS REQUIRED FOR CLIP ATTACHMENT.
5. METAL FRAMING MEMBERS MUST BE A MINIMUM OF 18 GA.



10 mm METAL STUD PANEL INSIDE CORNER DETAIL INTO MASONRY

SCALE: 3" = 1'-0"