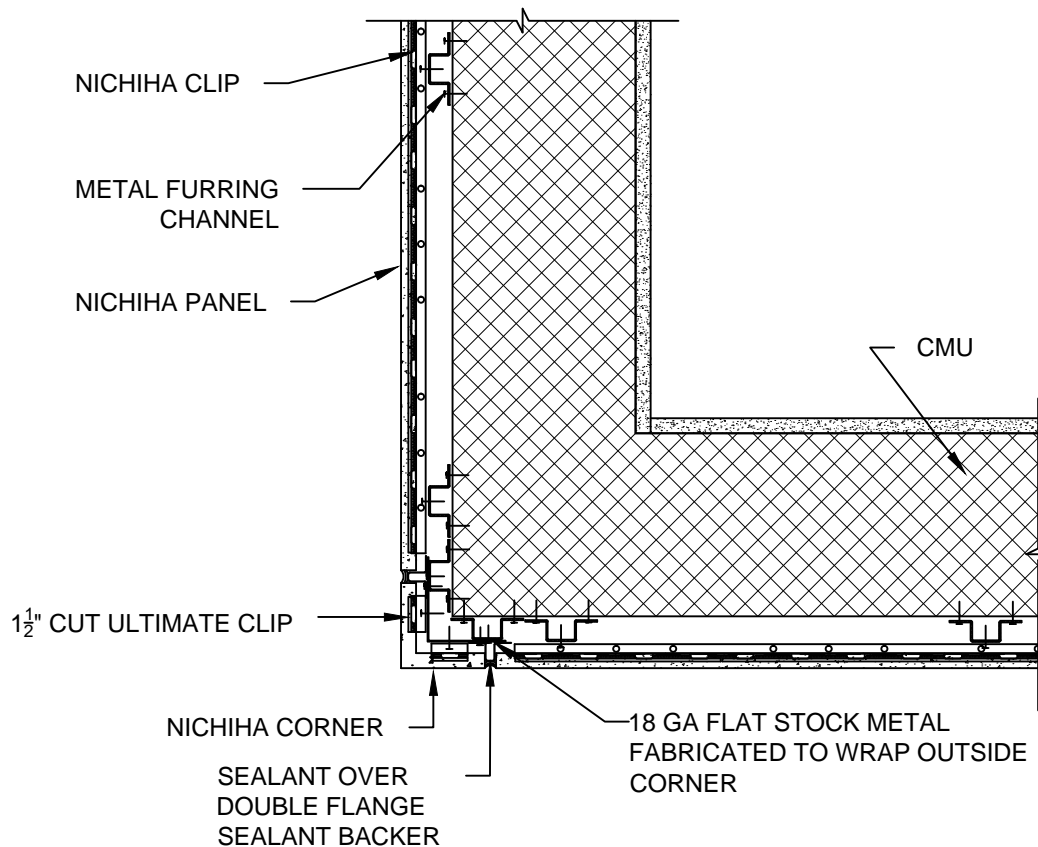


NOTES:

1. THIS CONCEPTUAL DETAIL IS A GUIDE FOR INSTALLATION OF NICHIIHA PRODUCTS. ARCHITECTS/ENGINEERS/CONTRACTORS ARE RESPONSIBLE FOR SUCCESSFUL APPLICATION WHICH DEPENDS UPON SUBSTRATE DESIGN AND CONSTRUCTION BUILT IN ACCORDANCE WITH BEST PRACTICES AND LOCAL BUILDING CODES.
2. NICHIIHA PANEL REPRESENTED HERE IS 5/8" NICHIIHA PRODUCT, ADJUST ACCORDINGLY FOR OTHER NICHIIHA PRODUCT THICKNESSES.
3. METAL FURRING CHANNEL CAN BE "Z" OR HAT CHANNEL (SHOWN HERE) AND MUST BE A MINIMUM OF 18 GA.
4. COMPLY WITH LOCAL BUILDING CODE FOR REQUIREMENT OF WRB.



10 mm CMU WITH FURRING 6' & 10' HORIZONTAL PANEL OUTSIDE CORNER
DETAIL- NICHIIHA PRE-MANUFACTURED CORNER - METHOD 1

SCALE: 1 1/2" = 1'-0"