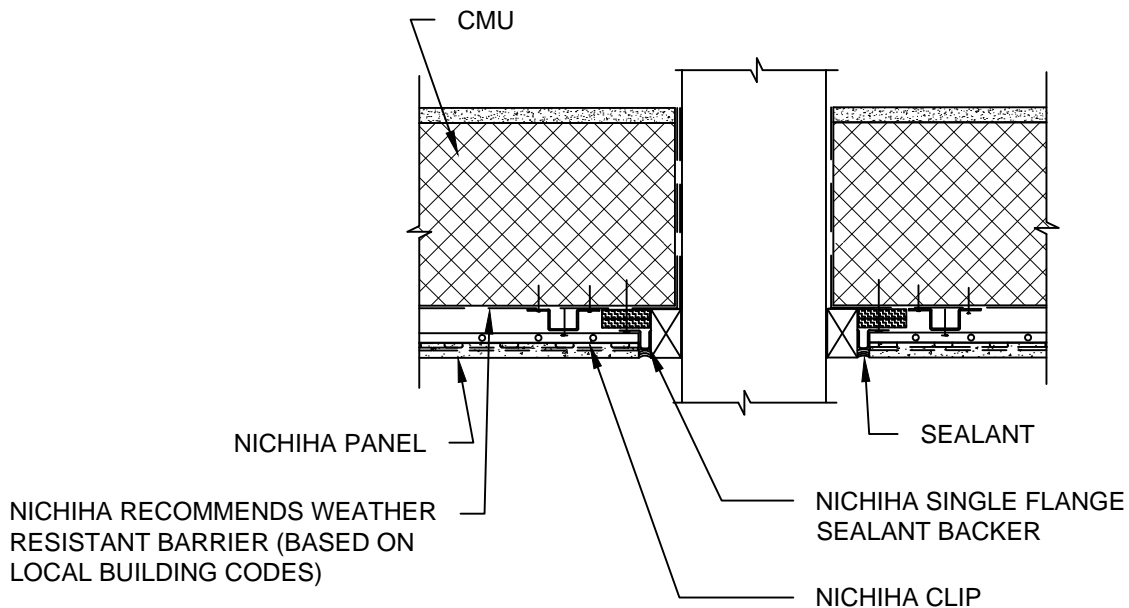


NOTES:

1. THIS CONCEPTUAL DETAIL IS A GUIDE FOR INSTALLATION OF NICHIIHA PRODUCTS. ARCHITECTS/ENGINEERS/CONTRACTORS ARE RESPONSIBLE FOR SUCCESSFUL APPLICATION WHICH DEPENDS UPON SUBSTRATE DESIGN AND CONSTRUCTION BUILT IN ACCORDANCE WITH BEST PRACTICES AND LOCAL BUILDING CODES.
2. METAL FURRING CHANNEL CAN BE "Z" OR HAT CHANNEL AND MUST BE A MINIMUM OF 18 GA.
3. COMPLY WITH LOCAL BUILDING CODE FOR REQUIREMENT OF WRB.
4. NICHIIHA PANEL REPRESENTED HERE IS 5/8" NICHIIHA PRODUCT, ADJUST ACCORDINGLY FOR OTHER NICHIIHA PRODUCT THICKNESSES.
5. FOR PENETRATIONS GREATER THAN 1.5", BLOCK/FRAME OUT THE OPENING. SMALLER PENETRATIONS MAY BE CUT THROUGH PANEL AND SEALED WITH POLYURETHANE SEALANT.



10 mm CMU WITH FURRING 6-10' HORIZONTAL PANEL PENETRATIONS -
PLAN VIEW

SCALE: 1 1/2" = 1'-0"