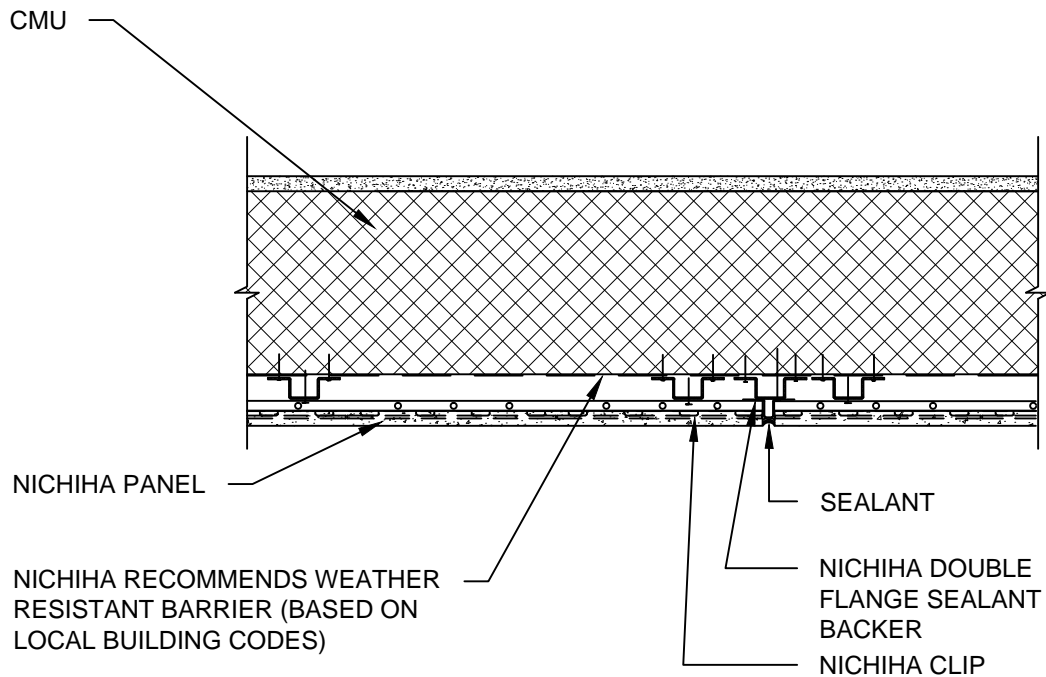


NOTES:

1. THIS CONCEPTUAL DETAIL IS A GUIDE FOR INSTALLATION OF NICHHA PRODUCTS. ARCHITECTS/ENGINEERS/CONTRACTORS ARE RESPONSIBLE FOR SUCCESSFUL APPLICATION WHICH DEPENDS UPON SUBSTRATE DESIGN AND CONSTRUCTION BUILT IN ACCORDANCE WITH BEST PRACTICES AND LOCAL BUILDING CODES.
2. METAL FURRING CHANNEL CAN BE "Z" OR 7/8" HAT CHANNEL AND MUST BE A MINIMUM OF 18 GA.
3. COMPLY WITH LOCAL BUILDING CODE FOR REQUIREMENT OF WRB.
4. NICHHA PANEL REPRESENTED HERE IS 5/8" NICHHA PRODUCT, ADJUST ACCORDINGLY FOR OTHER NICHHA PRODUCT THICKNESSES.



10 mm CMU WITH FURRING 6-10' HORIZONTAL PANEL EXPANSION JOINT DETAIL

SCALE: 1 1/2" = 1'-0"