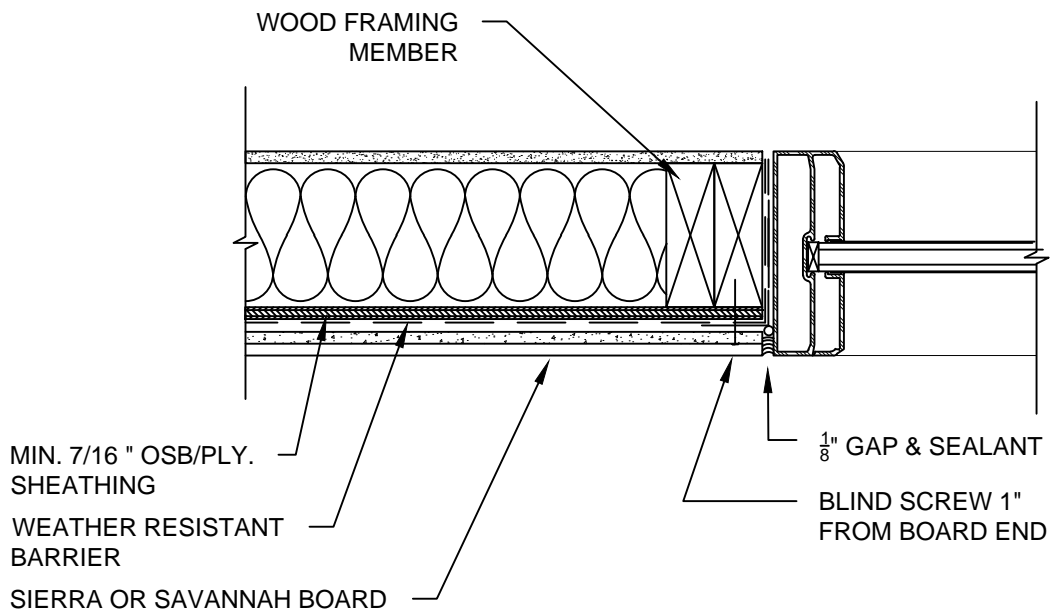


NOTES:

1. THIS CONCEPTUAL DETAIL IS A GUIDE FOR INSTALLATION OF NICHHA PRODUCTS. ARCHITECTS/ENGINEERS/CONTRACTORS ARE RESPONSIBLE FOR SUCCESSFUL APPLICATION WHICH DEPENDS UPON SUBSTRATE DESIGN AND CONSTRUCTION BUILT IN ACCORDANCE WITH BEST PRACTICES AND LOCAL BUILDING CODES.
2. SHEATHING REPRESENTED HERE IS 1/2" PLYWOOD OR 7/16" OSB (IF USING OTHER THICKNESSES ADJUST ACCORDINGLY).
3. BLIND FASTENERS MUST BE MIN. 1" FROM END OF BOARD FOR BUTT JOINTS AND CORNERS AND 1" FROM TOP EDGE.
4. MUST USE #8 FULLY THREADED BUGLE HEAD SCREWS AT BOARD ENDS.
5. CUT ENDS OF BOARD MUST BE SEALED WITH PRIMER OR PAINT.



WOOD STANDARD SIERRA SHAKE/SAVANNAH SMOOTH
WINDOW JAMB DETAIL

SCALE: 1/2" = 1'-0"