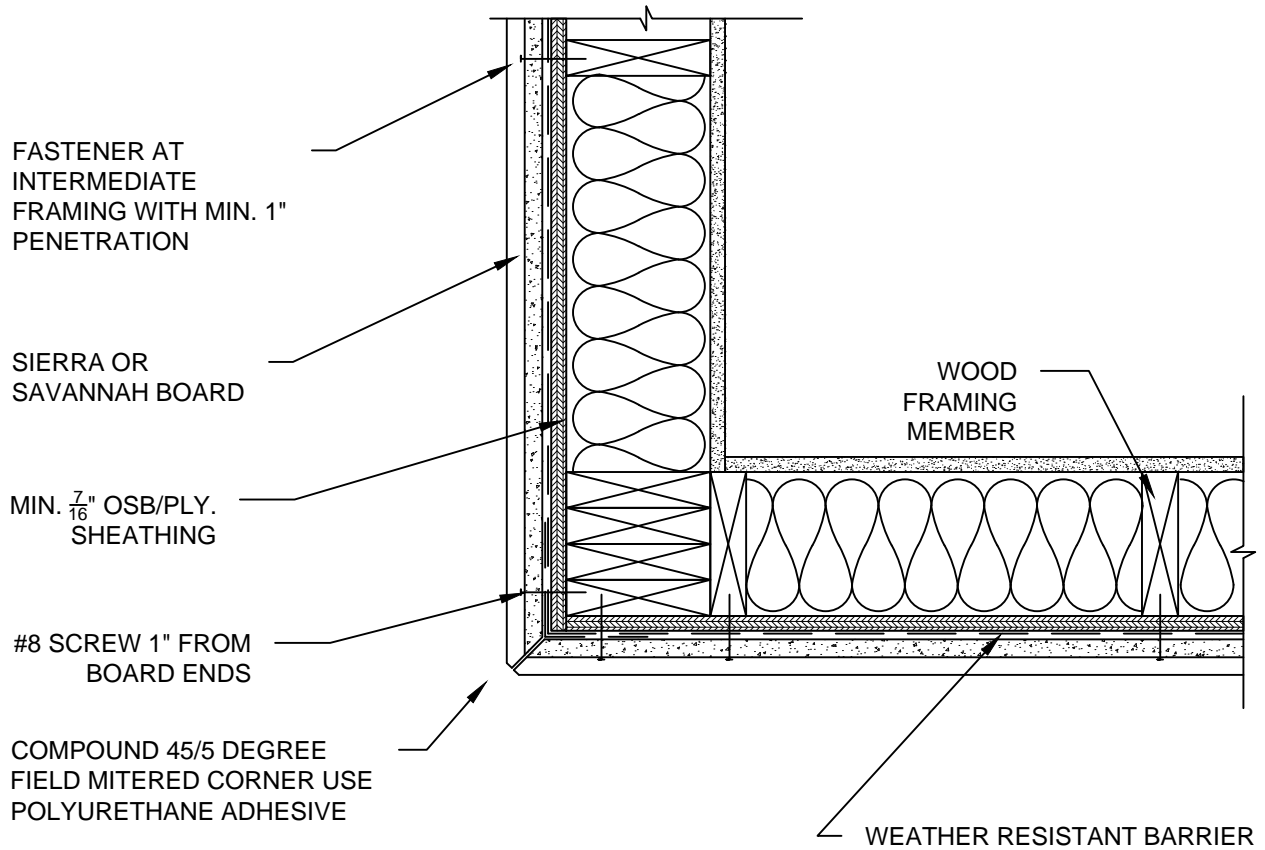


NOTES:

1. THIS CONCEPTUAL DETAIL IS A GUIDE FOR INSTALLATION OF NICHIBA PRODUCTS. ARCHITECTS/ENGINEERS/CONTRACTORS ARE RESPONSIBLE FOR SUCCESSFUL APPLICATION WHICH DEPENDS UPON SUBSTRATE DESIGN AND CONSTRUCTION BUILT IN ACCORDANCE WITH BEST PRACTICES AND LOCAL BUILDING CODES.
2. SHEATHING REPRESENTED HERE IS 1/2" PLYWOOD OR 7/16" OSB (IF USING OTHER THICKNESSES ADJUST ACCORDINGLY).
3. BLIND FASTENERS MUST BE MIN. 1" FROM END OF BOARD FOR BUTT JOINTS AND CORNERS AND 1" FROM TOP EDGE.
4. MUST USE #8 FULL THREAD, BUGLE HEAD SCREWS AT BOARD ENDS.
5. CUT ENDS OF BOARD MUST BE SEALED WITH PRIMER OR PAINT.



WOOD STANDARD SIERRA SHAKE/SAVANNAH SMOOTH  
OUTSIDE CORNER DETAIL - MITERED CORNER

SCALE: 1 1/2" = 1'-0"