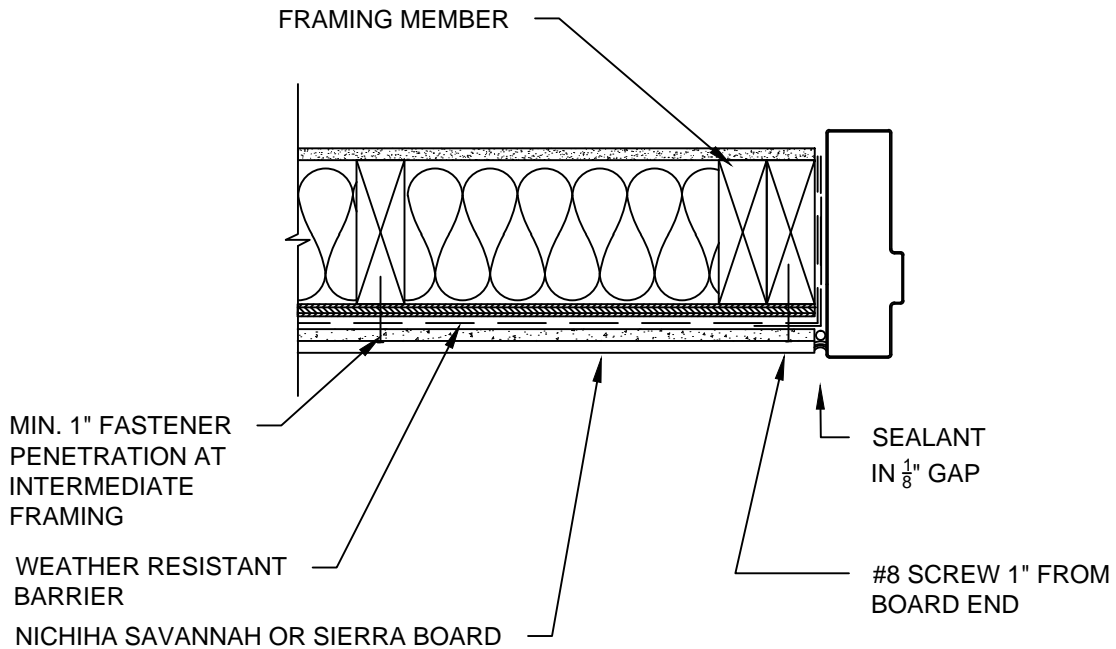


NOTES:

1. THIS CONCEPTUAL DETAIL IS A GUIDE FOR INSTALLATION OF NICHIIA PRODUCTS. ARCHITECTS/ENGINEERS/CONTRACTORS ARE RESPONSIBLE FOR SUCCESSFUL APPLICATION WHICH DEPENDS UPON SUBSTRATE DESIGN AND CONSTRUCTION BUILT IN ACCORDANCE WITH BEST PRACTICES AND LOCAL BUILDING CODES.
2. SHEATHING REPRESENTED HERE IS 1/2" PLYWOOD OR 7/16" OSB (IF USING OTHER THICKNESSES ADJUST ACCORDINGLY).
3. BLIND FASTENERS MUST BE 1" FROM END OF BOARD FOR BUTT JOINTS AND CORNERS AND 1" FROM TOP EDGE. #8 BUGLE HEAD, FULL THREAD SCREWS REQUIRED AT BOARD ENDS/BUTT JOINTS.
4. CUT ENDS OF BOARD MUST BE SEALED WITH PRIMER OR PAINT.



WOOD STANDARD SIERRA SHAKE/SAVANNAH SMOOTH
DOOR JAMB DETAIL

SCALE: $\frac{1}{2}$ " = 1'-0"