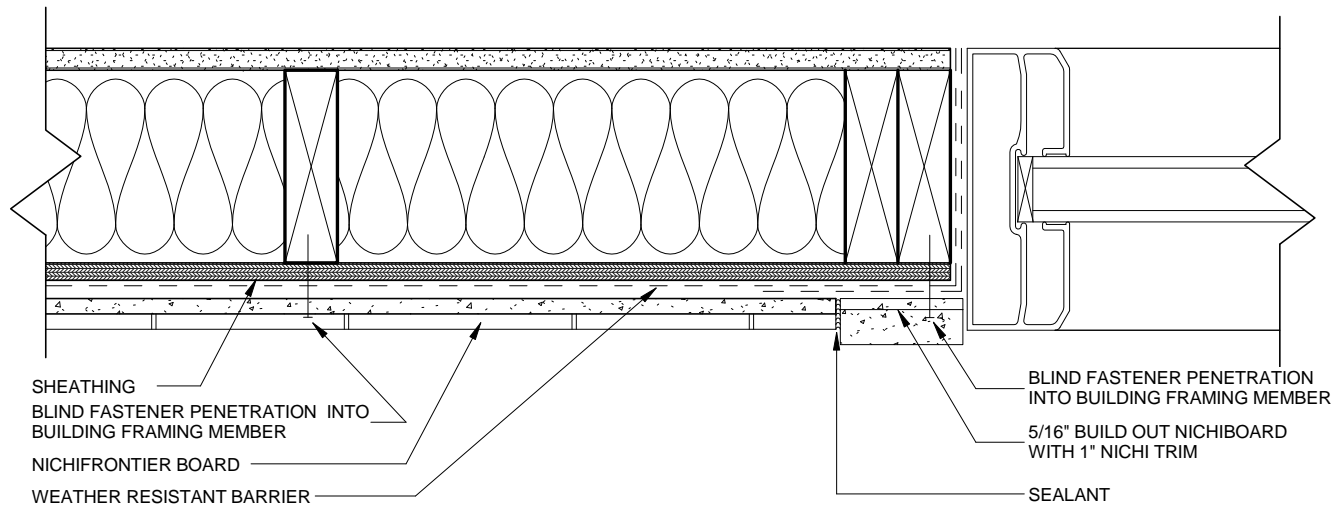


NOTES:

1. THIS CONCEPTUAL DETAIL IS A GUIDE FOR INSTALLATION OF NICHIIHA PRODUCTS. ARCHITECTS/ENGINEERS/CONTRACTORS ARE RESPONSIBLE FOR SUCCESSFUL APPLICATION WHICH DEPENDS UPON SUBSTRATE DESIGN AND CONSTRUCTION BUILT IN ACCORDANCE WITH BEST PRACTICES AND LOCAL BUILDING CODES.
2. SHEATHING (REPRESENTED HERE IS 1/2" PLYWOOD OR 7/16" OSB (IF USING OTHER THICKNESSES ADJUST ACCORDINGLY).
3. BLIND FASTENERS MUST BE MIN. 1/2" FROM END OF BOARD FOR BUTT JOINTS AND CORNERS AND 1" FROM TOP EDGE.
4. ALL BOARD ENDS MUST BE ATTACHED ONTO VERTICAL FRAMING MEMBERS.
5. CUT ENDS OF BOARD MUST BE PAINTED OR SEALED.
6. SHOWN HERE IS 5/16" BUILD OUT WITH 1" NICHII TRIM. OTHER COMBINATIONS MAY BE APPROPRIATE FOR YOUR SPECIFIC APPLICATION.



WOOD STANDARD NICHIFRONTIER WINDOW JAMB WITH FC TRIM DETAIL

SCALE: 3" = 1'-0"