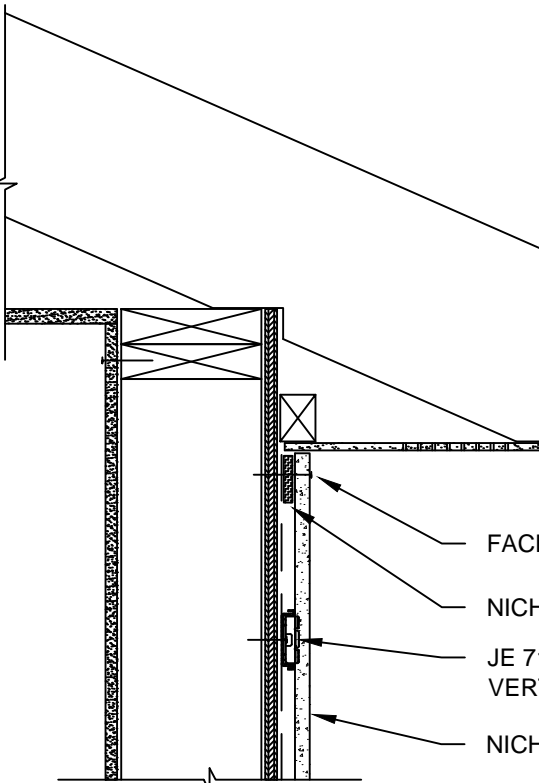


NOTES:

1. THIS CONCEPTUAL DETAIL IS A GUIDE FOR INSTALLATION OF NICHHA PRODUCTS. ARCHITECTS/ENGINEERS/CONTRACTORS ARE RESPONSIBLE FOR SUCCESSFUL APPLICATION WHICH DEPENDS UPON SUBSTRATE DESIGN AND CONSTRUCTION BUILT IN ACCORDANCE WITH BEST PRACTICES AND LOCAL BUILDING CODES.
2. FOR THIS APPLICATION ONLY USE NICHHA 5/8" PANEL SET VERTICALLY.
3. SHEATHING (7/16" OR THICKER APA RATED OSB OR PLYWOOD REQUIRED).

TOP OF PANEL  
DETAIL



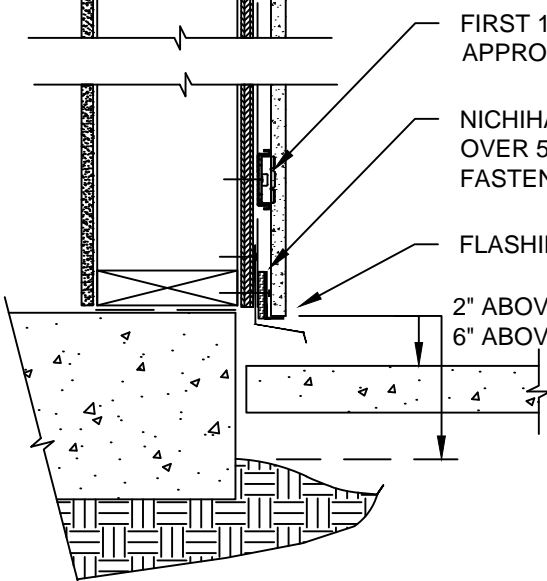
- FACE FASTENER
- NICHHA 10mm SPACER
- JE 710 CLIP MAX. 16" O.C. VERTICAL SPACING
- NICHHA PANEL

SUPPORT CLIP  
DETAIL



- SHEATHING
- FASTENER APPLIED TO VERTICAL BUILDING FRAMING MEMBER
- NICHHA STARTER TRACK FA300 OVER 5MM SPACER
- FLASHING BY OTHERS
- NICHHA 10MM SPACER
- WEATHER RESISTANT BARRIER

STARTER TRACK  
DETAIL



- FIRST 10MM NICHHA CLIP TO BE APPROX. 6" FROM STARTER TRACK
- NICHHA STARTER TRACK FA300 OVER 5MM CORRUGATED SPACER FASTENER LOCATED ON STUD
- FLASHING OPTIONAL
- 2" ABOVE HARD SURFACE OR 6" ABOVE FINAL GRADE

WOOD STANDARD 10' VERTICAL 10MM RAINSCREEN PANEL TYPICAL WALL DETAIL  
SCALE: 1/2" = 1'-0"