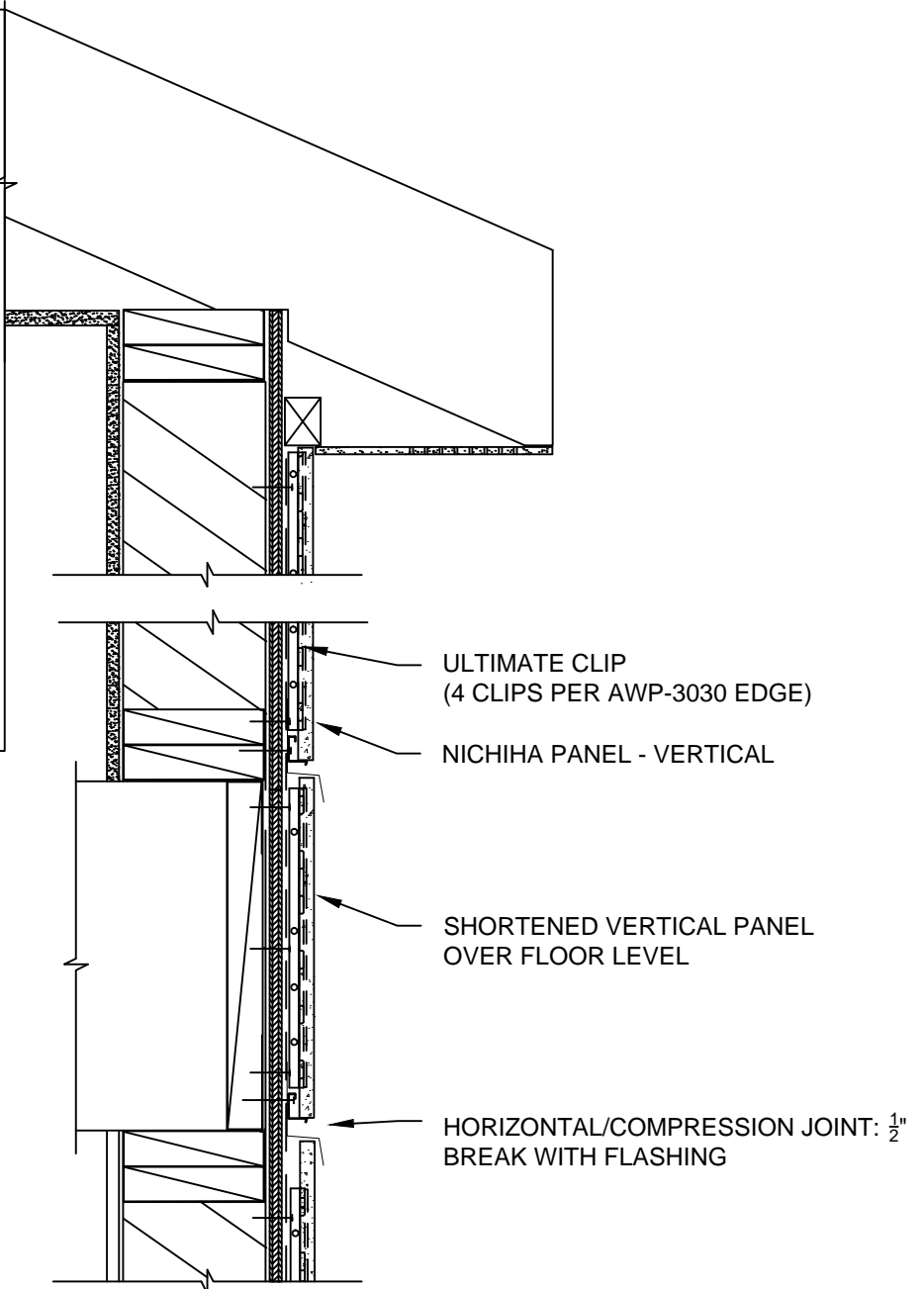


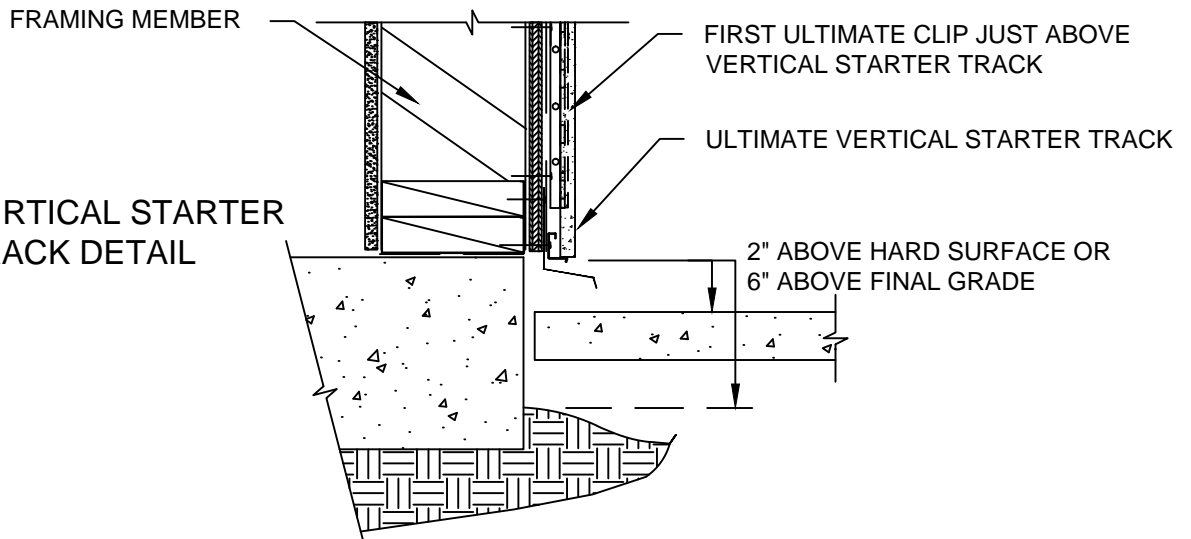
**NOTES:**

1. THIS CONCEPTUAL DETAIL IS A GUIDE FOR INSTALLATION OF NICHIIHA PRODUCTS. ARCHITECTS/ENGINEERS/CONTRACTORS ARE RESPONSIBLE FOR SUCCESSFUL APPLICATION WHICH DEPENDS UPON SUBSTRATE DESIGN AND CONSTRUCTION BUILT IN ACCORDANCE WITH BEST PRACTICES AND LOCAL BUILDING CODES.
2. ONLY NICHIIHA AWP-3030 MAY BE USED FOR VERTICAL APPLICATIONS.
3. DO NOT SPAN FLOOR LINES. THIS DETAIL SHOWS ONE APPROACH FOR WHEN FLOOR HEIGHTS ARE GREATER THAN 10 FEET.
4. SHEATHING: 7/16" OR THICKER APA RATED OSB OR PLYWOOD REQUIRED WITH STUD SPACING OTHER THAN 45.5 CM (17-7/8") O.C.
5. METAL FRAMING MEMBERS MUST BE A MINIMUM OF 18 GA.

**TRANSITION  
DETAIL**



**VERTICAL STARTER  
TRACK DETAIL**



**AWP-3030 VERTICAL WITH VERTICAL PANEL BAND -  
TRANSITION DETAIL**