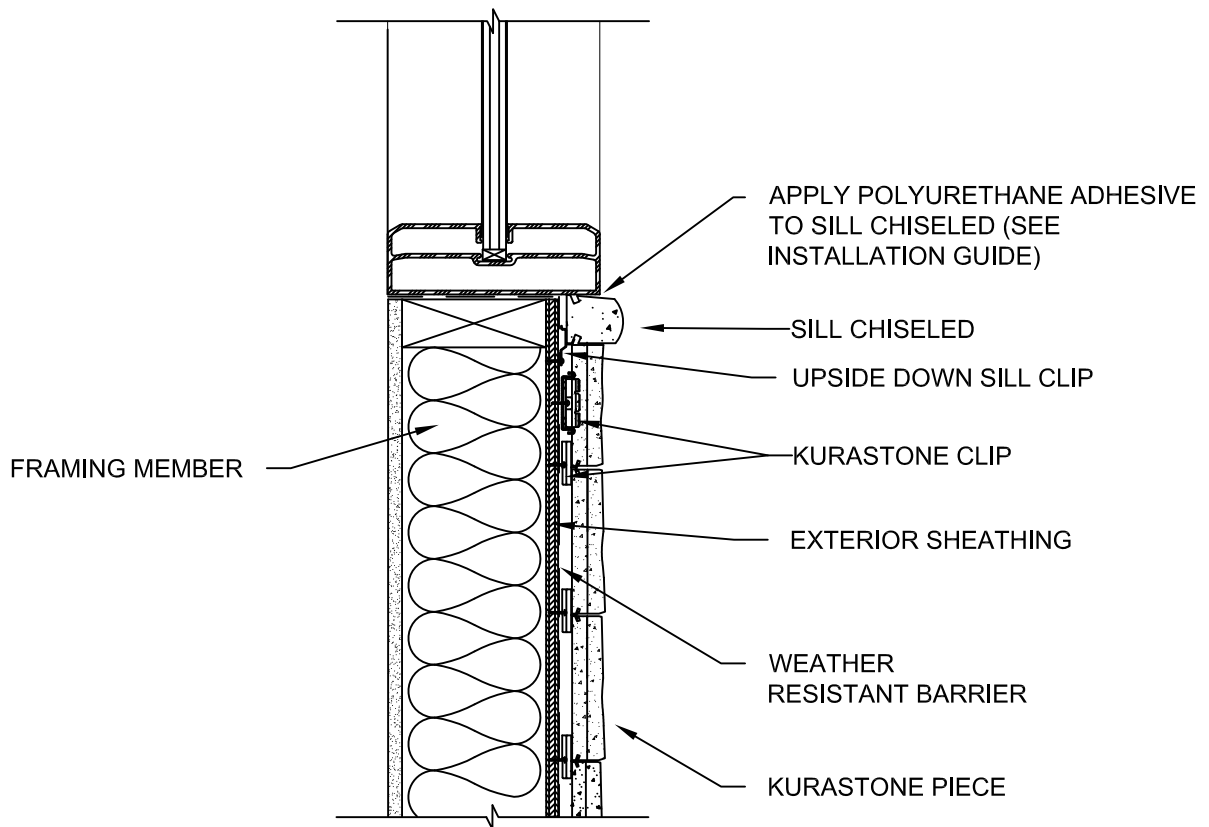


NOTES:

1. THIS CONCEPTUAL DETAIL IS A GUIDE FOR INSTALLATION OF NICHIIHA PRODUCTS. ARCHITECTS/ENGINEERS/CONTRACTORS ARE RESPONSIBLE FOR SUCCESSFUL APPLICATION WHICH DEPENDS UPON SUBSTRATE DESIGN AND CONSTRUCTION BUILT IN ACCORDANCE WITH BEST PRACTICES AND LOCAL BUILDING CODES.
2. 15 OR 30 LB BLACK FELT REQUIRED BEHIND KURASTONE.
3. SHEATHING REPRESENTED HERE IS 1/2" PLYWOOD OR 7/16" OSB IF USING OTHER THICKNESSES ADJUST ACCORDINGLY.



10 mm - WOOD STANDARD WINDOW SILL
KURASTONE WITH SILL CHISELED DETAIL

SCALE: 3" = 1'-0"