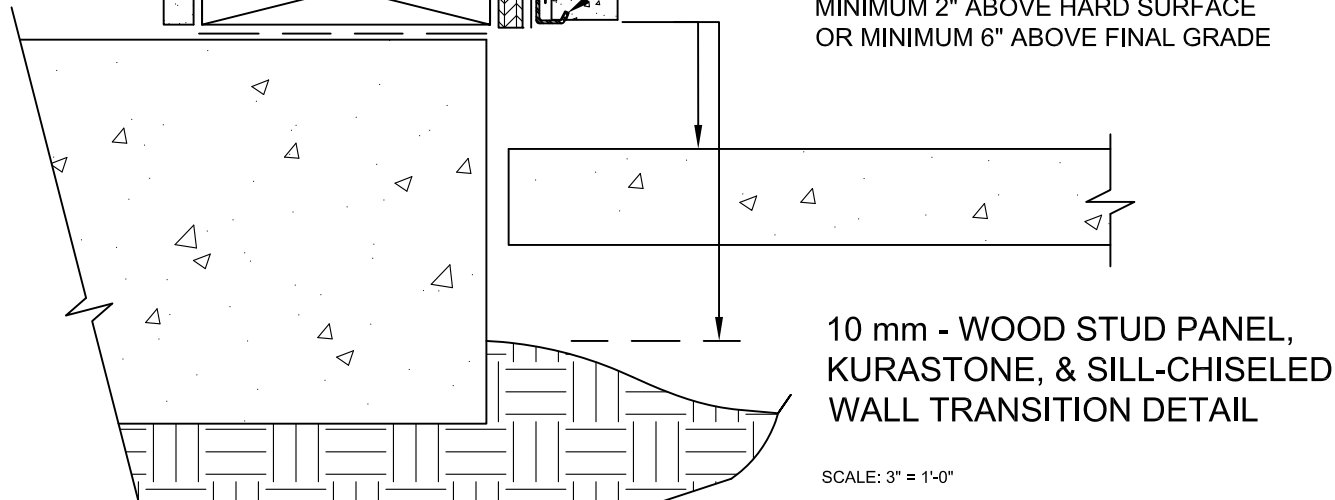
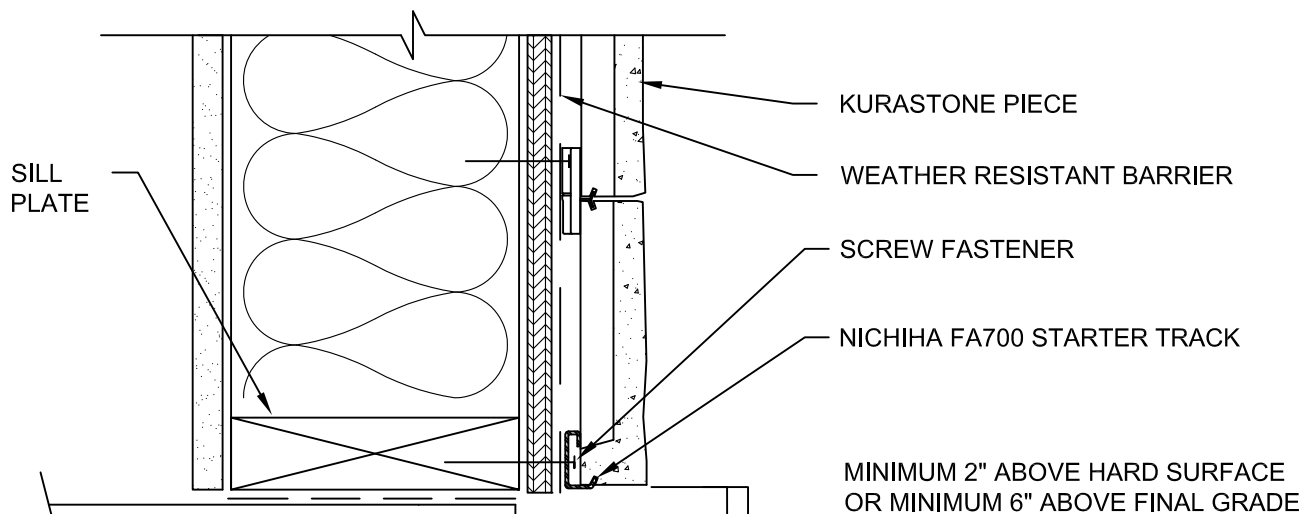
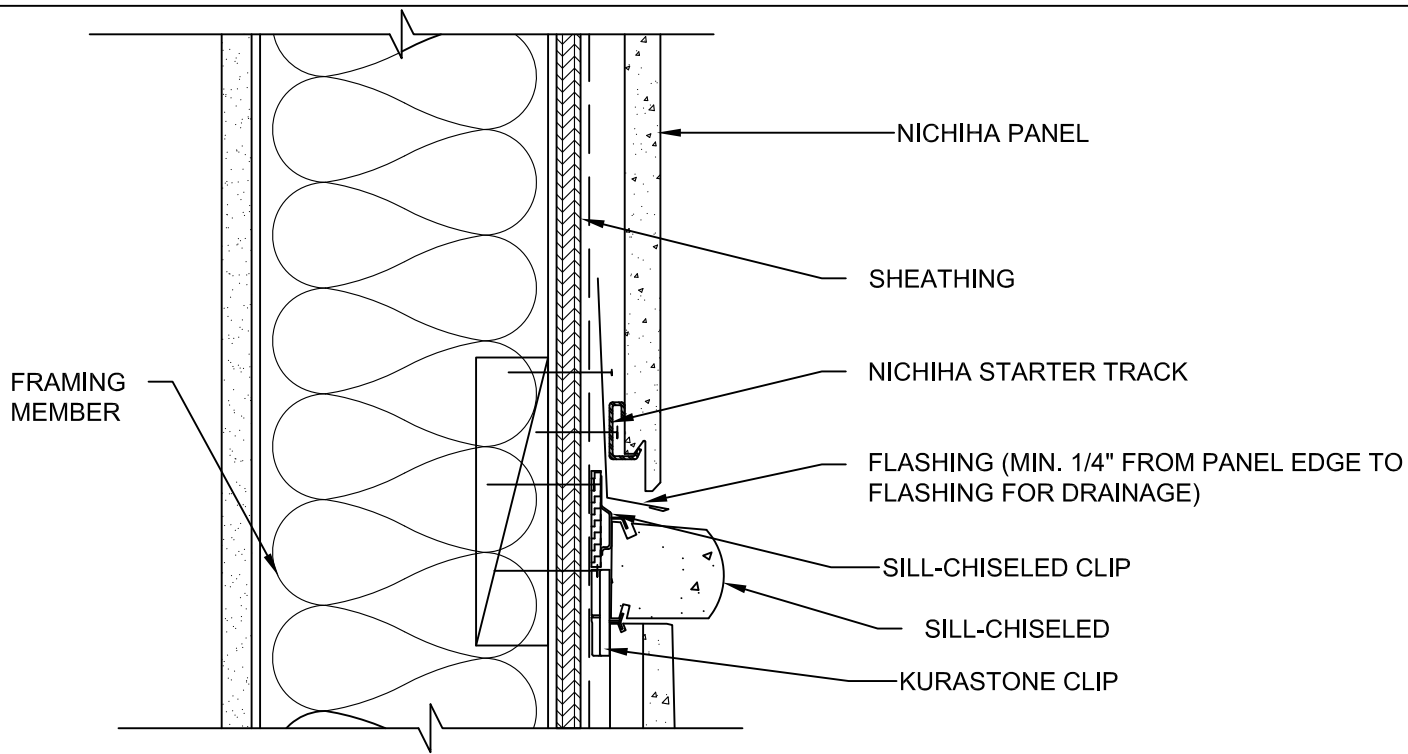


NOTES:

1. THIS CONCEPTUAL DETAIL IS A GUIDE FOR INSTALLATION OF NICHIIHA PRODUCTS. ARCHITECTS/ENGINEERS/ CONTRACTORS ARE RESPONSIBLE FOR SUCCESSFUL APPLICATION WHICH DEPENDS UPON SUBSTRATE DESIGN AND CONSTRUCTION BUILT IN ACCORDANCE WITH BEST PRACTICES AND LOCAL BUILDING CODES.
2. SHEATHING REPRESENTED HERE IS 1/2" PLYWOOD OR 7/16" OSB, FOR OTHER THICKNESSES ADJUST ACCORDINGLY.
3. CLEARANCE BETWEEN PANEL EDGE AND KURASTONE SILL CHISELED MUST BE A MINIMUM OF 1/2".



SCALE: 3" = 1'-0"