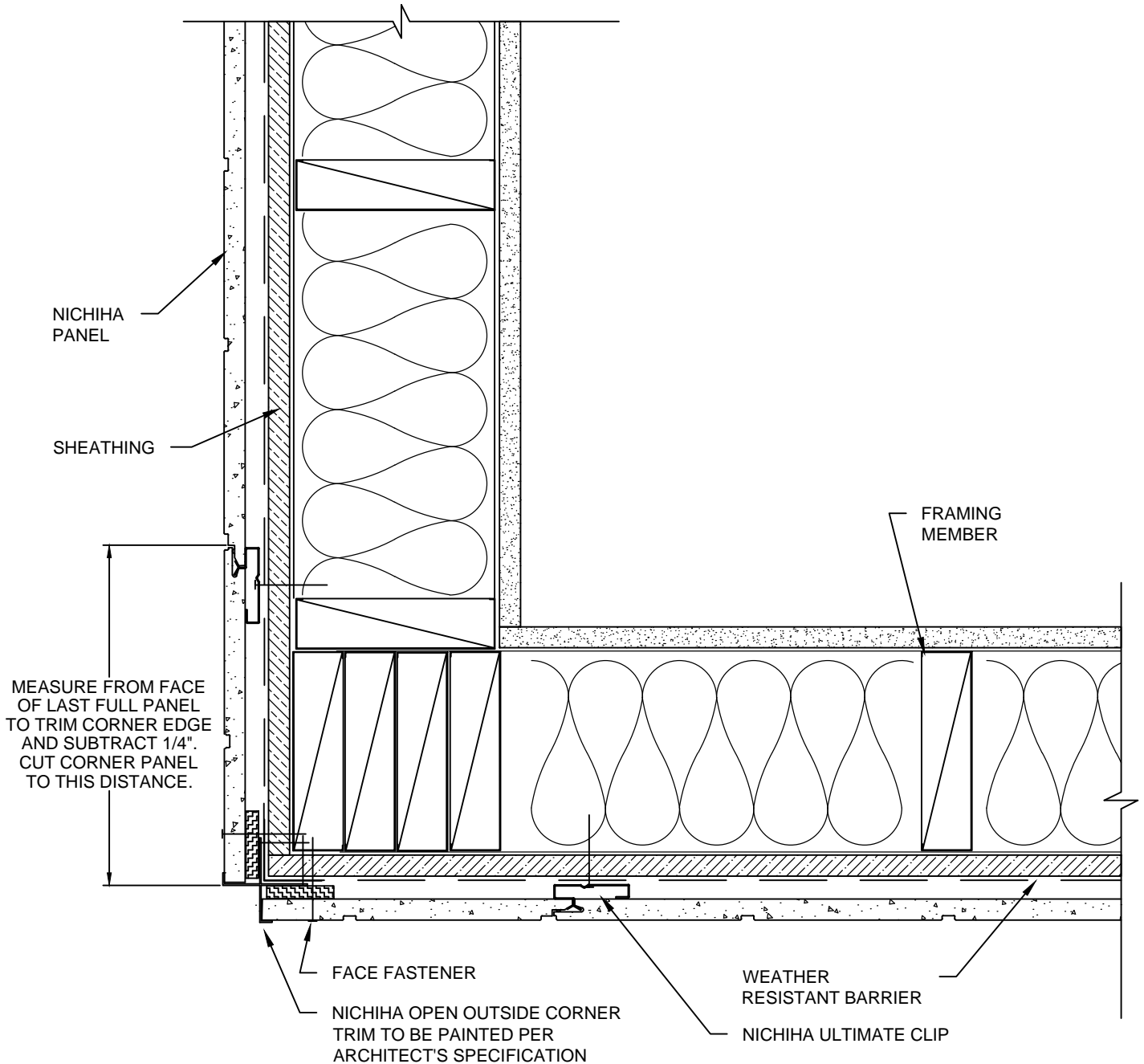


NOTES:

1. THIS CONCEPTUAL DETAIL IS A GUIDE FOR INSTALLATION OF NICHIIHA PRODUCTS. ARCHITECTS/ENGINEERS/CONTRACTORS ARE RESPONSIBLE FOR SUCCESSFUL APPLICATION WHICH DEPENDS UPON SUBSTRATE DESIGN AND CONSTRUCTION BUILT IN ACCORDANCE WITH BEST PRACTICES AND LOCAL BUILDING CODES.
2. FOR THIS APPLICATION ONLY USE NICHIIHA 10', 5/8" PANEL SET VERTICALLY.
3. SHEATHING: 7/16" OR THICKER APA RATED OSB OR PLYWOOD REQUIRED WITH STUD SPACING OTHER THAN 45.5 CM (17-7/8") O.C.
4. METAL FRAMING MEMBERS MUST BE A MINIMUM OF 18 GA.
5. SEE INSTALLATION GUIDE FOR 10-FOOT VERTICAL AWP FOR CORNER INSTALLATION SEQUENCE.



STANDARD - 10' PANEL VERTICAL - OUTSIDE CORNER DETAIL -
NICHIIHA OPEN OUTSIDE CORNER TRIM

SCALE: 3" = 1'-0"