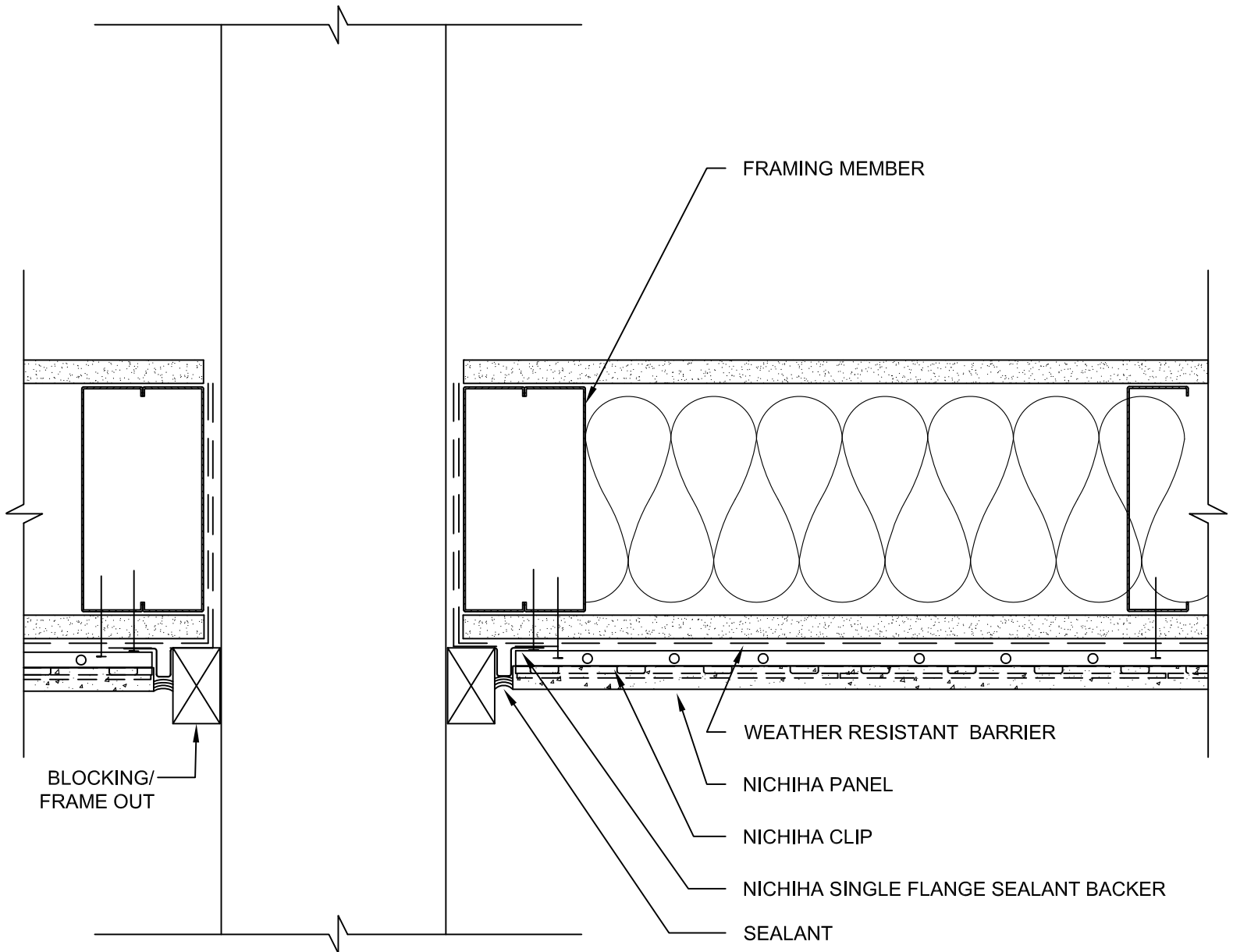


NOTES:

1. THIS CONCEPTUAL DETAIL IS A GUIDE FOR INSTALLATION OF NICHIIHA PRODUCTS. ARCHITECTS/ENGINEERS/CONTRACTORS ARE RESPONSIBLE FOR SUCCESSFUL APPLICATION WHICH DEPENDS UPON SUBSTRATE DESIGN AND CONSTRUCTION BUILT IN ACCORDANCE WITH BEST PRACTICES AND LOCAL BUILDING CODES.
2. METAL FRAMING MEMBERS MUST BE A MINIMUM OF 18 GA.
3. NICHIIHA PANEL REPRESENTED HERE IS 5/8" NICHIIHA PRODUCT, ADJUST ACCORDINGLY FOR OTHER NICHIIHA PRODUCT THICKNESSES.
4. SHEATHING REPRESENTED HERE IS 5/8" EXTERIOR GYPSUM WALLBOARD, IF USING OSB OR PLYWOOD ADJUST ACCORDINGLY.
5. FOR PENETRATIONS GREATER THAN 1.5", BLOCK/FRAME OUT THE OPENING. SMALLER PENETRATIONS MAY BE CUT THROUGH PANEL AND SEALED WITH POLYURETHANE SEALANT.



10 mm - METAL STUD PANEL 6 X 6 PENETRATION PLAN DETAIL

SCALE: 3" = 1'-0"