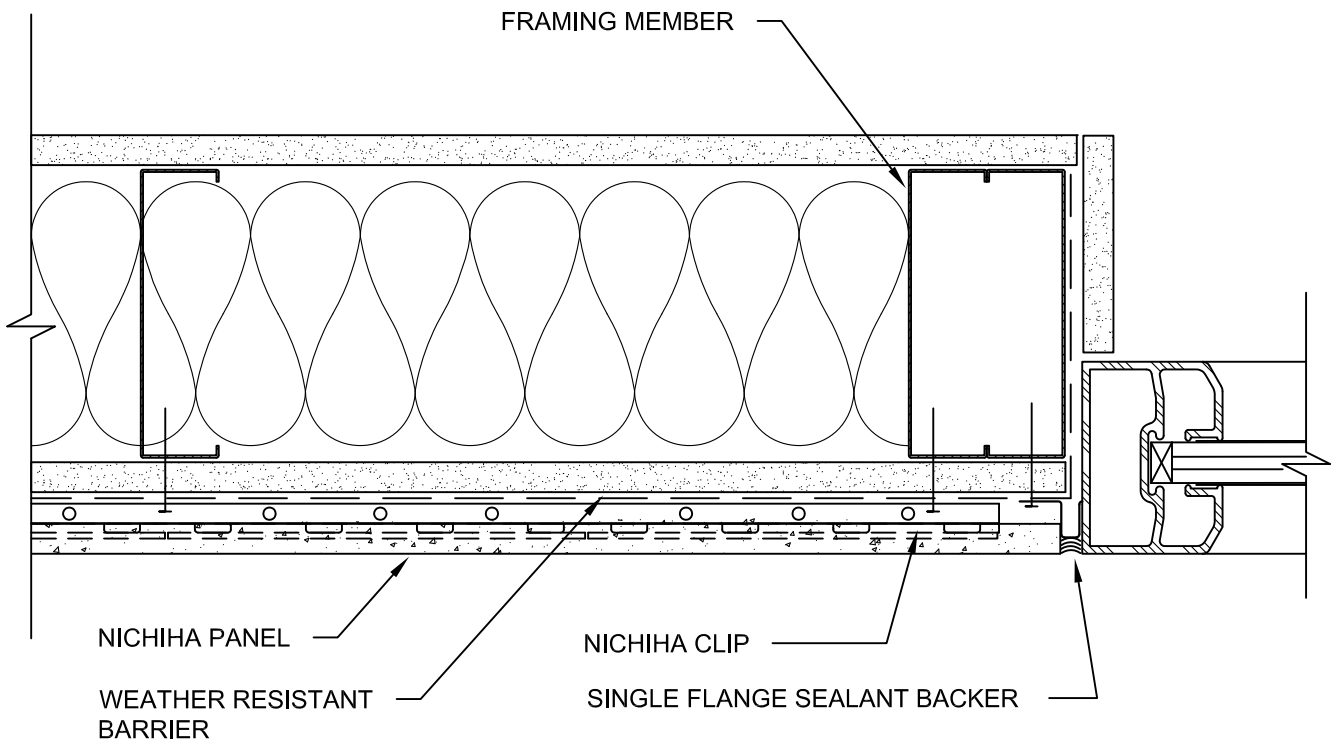


NOTES:

1. THIS CONCEPTUAL DETAIL IS A GUIDE FOR INSTALLATION OF NICHHA PRODUCTS. ARCHITECTS/ENGINEERS/CONTRACTORS ARE RESPONSIBLE FOR SUCCESSFUL APPLICATION WHICH DEPENDS UPON SUBSTRATE DESIGN AND CONSTRUCTION BUILT IN ACCORDANCE WITH BEST PRACTICES AND LOCAL BUILDING CODES.
2. NICHHA PANEL REPRESENTED HERE IS 5/8" NICHHA PRODUCT, ADJUST ACCORDINGLY FOR OTHER NICHHA PRODUCT THICKNESSES.
3. SHEATHING REPRESENTED HERE IS 5/8" EXTERIOR GYPSUM WALLBOARD, IF USING OSB OR PLYWOOD ADJUST ACCORDINGLY.
4. METAL FRAMING MEMBERS MUST BE A MINIMUM OF 18 GA.



10 mm - METAL STUD PANEL STOREFRONT FLUSH WINDOW JAMB
DETAIL

SCALE: 3" = 1'-0"