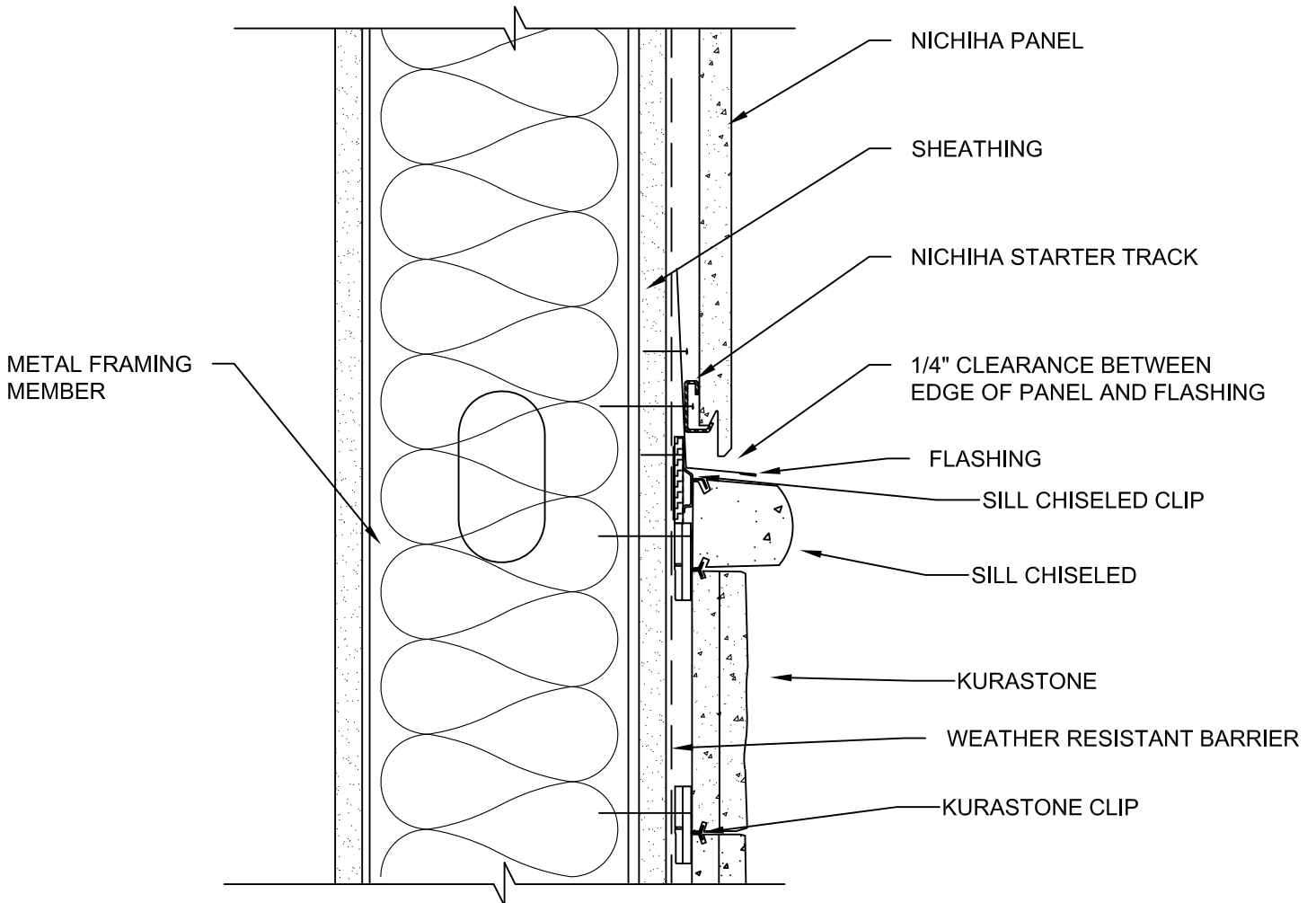


NOTES:

1. THIS CONCEPTUAL DETAIL IS A GUIDE FOR INSTALLATION OF NICHIIHA PRODUCTS. ARCHITECTS/ENGINEERS/CONTRACTORS ARE RESPONSIBLE FOR SUCCESSFUL APPLICATION WHICH DEPENDS UPON SUBSTRATE DESIGN AND CONSTRUCTION BUILT IN ACCORDANCE WITH BEST PRACTICES AND LOCAL BUILDING CODES.
2. NICHIIHA PANEL REPRESENTED HERE IS 5/8" NICHIIHA PRODUCT, ADJUST ACCORDINGLY FOR OTHER NICHIIHA PRODUCT THICKNESSES.
3. $\frac{7}{16}$ " OSB OR $\frac{1}{2}$ " PLYWOOD SHEATHING REQUIRED FOR KURASTONE INSTALLATIONS.
4. DISTANCE BETWEEN EDGE OF PANEL AND KURASTONE SILL CHISELED MUST PROVIDE A MINIMUM OF 1/2" CLEARANCE.
5. METAL FRAMING MEMBERS MUST BE A MINIMUM OF 18 GAUGE.



10 mm - METAL STUD PANEL KURASTONE SILL CHISELED TRANSITION WITH STARTER TRACK

SCALE: 3" = 1'-0"