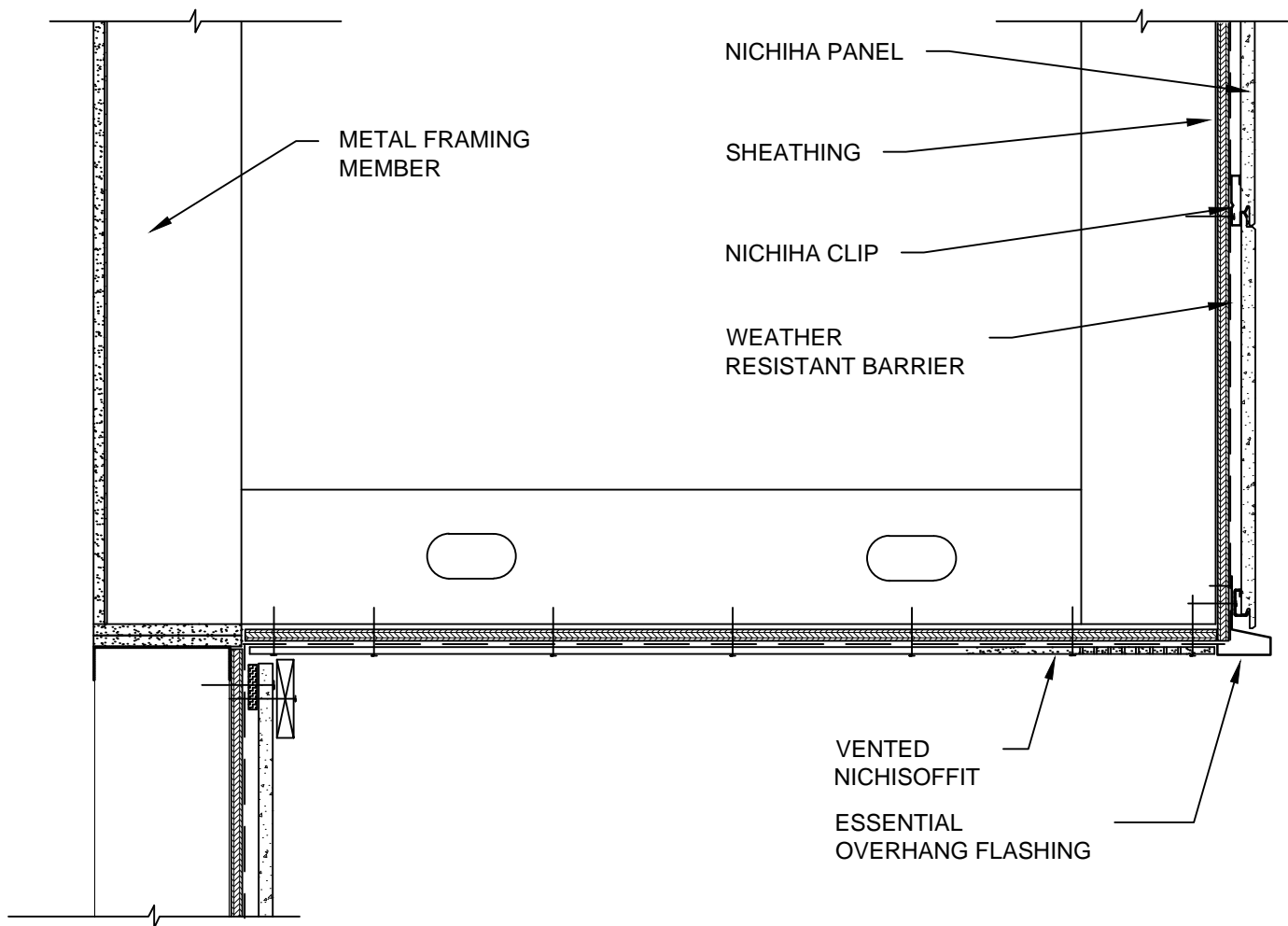


NOTES:

1. THIS CONCEPTUAL DETAIL IS A GUIDE FOR INSTALLATION OF NICHIIHA PRODUCTS. ARCHITECTS/ENGINEERS/CONTRACTORS ARE RESPONSIBLE FOR SUCCESSFUL APPLICATION WHICH DEPENDS UPON SUBSTRATE DESIGN AND CONSTRUCTION BUILT IN ACCORDANCE WITH BEST PRACTICES AND LOCAL BUILDING CODES.
2. NICHIIHA PANEL REPRESENTED HERE IS 5/8" NICHIIHA PRODUCT, ADJUST ACCORDINGLY FOR OTHER NICHIIHA PRODUCT THICKNESSES.
3. SHEATHING REPRESENTED HERE IS 1/2" PLYWOOD OR 7/16" OSB (IF USING OTHER THICKNESSES ADJUST ACCORDINGLY).
4. METAL FRAMING MEMBERS MUST BE A MINIMUM OF 18 GA.
5. SOFFIT NOT TO BE DEEPER THAN THREE PANELS.
6. INSIDE SOFFIT RECOMMEND PROVIDING SLIGHT SLOPE DOWNWARDS TOWARDS TRIM TO EVACUATE MOISTURE.
7. NICHISOFFIT FACE FASTENED INTO FRAMING AT 8" O.C.



METAL STANDARD 6' & 10' HORIZONTAL PANEL & NICHISOFFIT DETAIL

SCALE: 1½" = 1'-0"