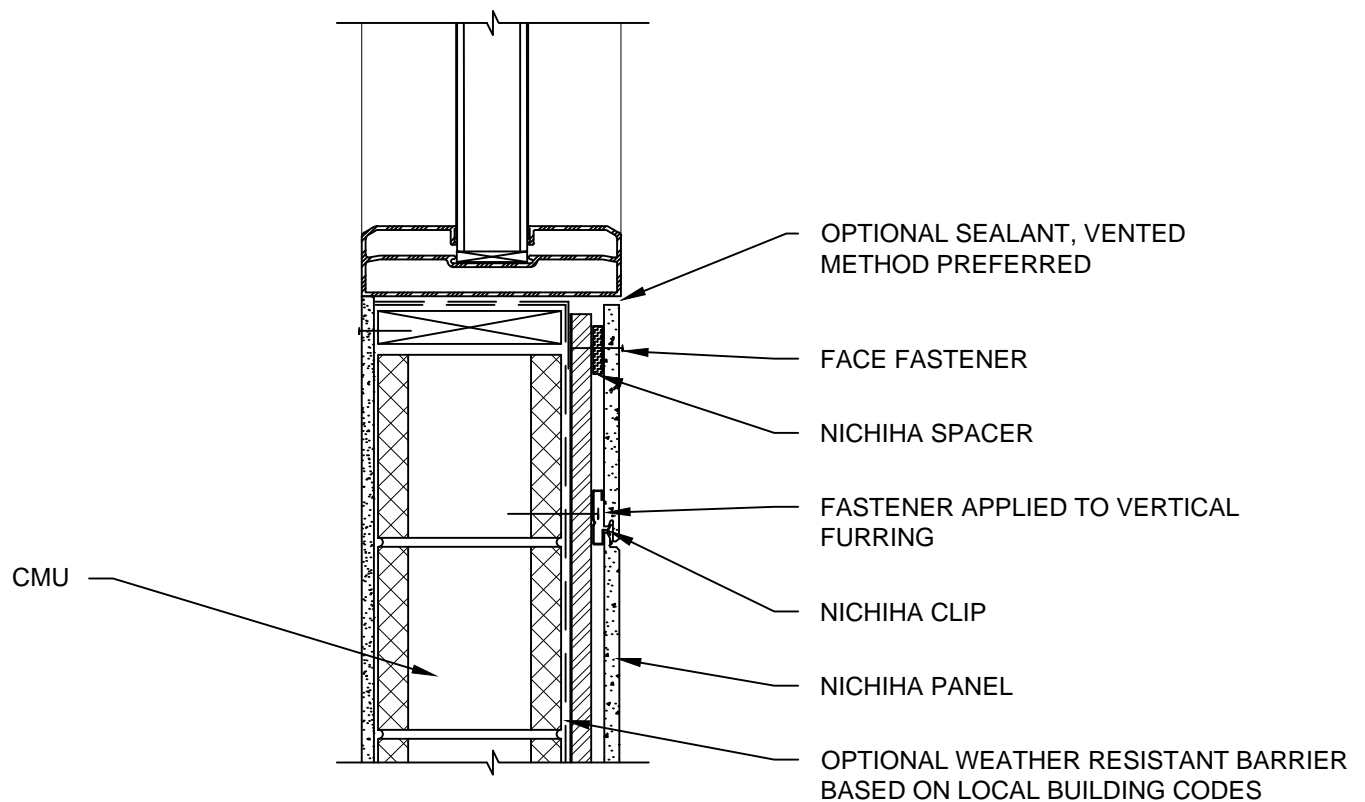


NOTES:

1. THIS CONCEPTUAL DETAIL IS A GUIDE FOR INSTALLATION OF NICHIIA PRODUCTS.  
ARCHITECTS/ENGINEERS/CONTRACTORS ARE RESPONSIBLE FOR SUCCESSFUL APPLICATION WHICH DEPENDS UPON SUBSTRATE DESIGN AND CONSTRUCTION BUILT IN ACCORDANCE WITH BEST PRACTICES AND LOCAL BUILDING CODES.
2. METAL FURRING CHANNEL CAN BE "Z" OR 7/8" HAT CHANNEL AND MUST BE A MINIMUM OF 18 GA.
3. COMPLY WITH LOCAL BUILDING CODE FOR REQUIREMENT OF WRB.
4. NICHIIA PANEL REPRESENTED HERE IS 5/8" NICHIIA PRODUCT, ADJUST ACCORDINGLY FOR OTHER NICHIIA PRODUCT THICKNESSES.



10 mm CMU WITH FURRING 6' & 10' HORIZONTAL PANEL WINDOW SILL DETAIL

SCALE: 1 1/2" = 1'-0"