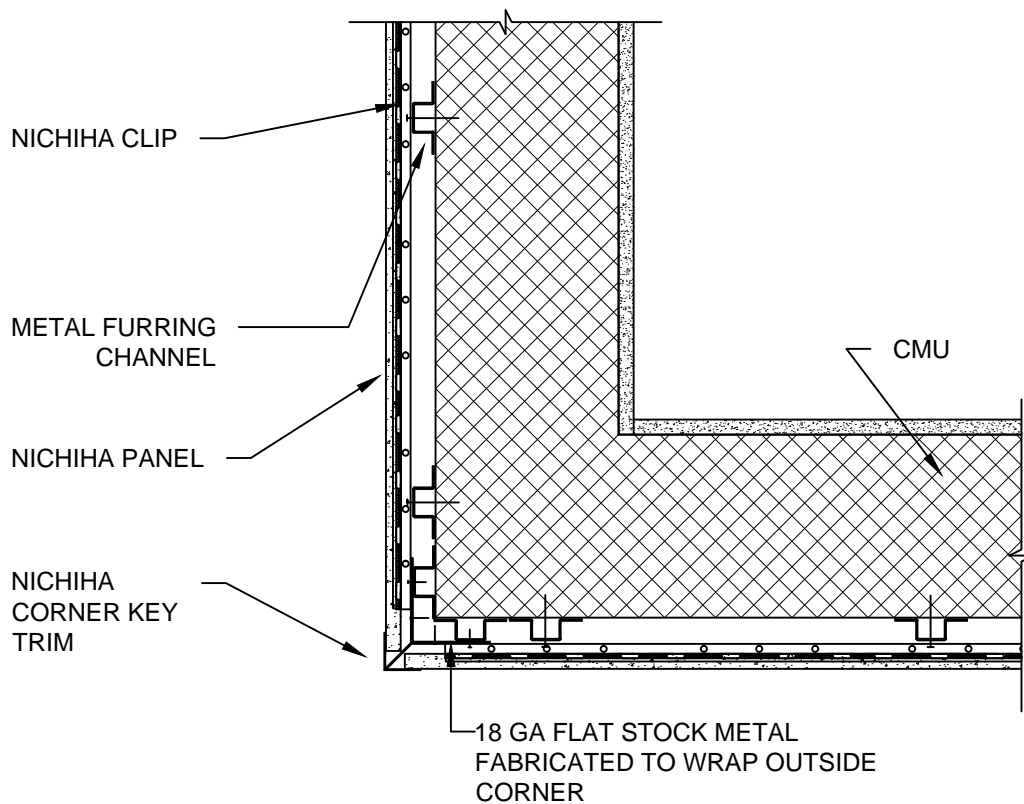


NOTES:

1. THIS CONCEPTUAL DETAIL IS A GUIDE FOR INSTALLATION OF NICHIIHA PRODUCTS. ARCHITECTS/ENGINEERS/CONTRACTORS ARE RESPONSIBLE FOR SUCCESSFUL APPLICATION WHICH DEPENDS UPON SUBSTRATE DESIGN AND CONSTRUCTION BUILT IN ACCORDANCE WITH BEST PRACTICES AND LOCAL BUILDING CODES.
2. METAL FURRING CHANNEL CAN BE "Z" OR 7/8" HAT CHANNEL (SHOWN HERE) AND MUST BE A MINIMUM OF 18 GA.
3. COMPLY WITH LOCAL BUILDING CODE FOR REQUIREMENT OF WRB.
4. NICHIIHA PANEL REPRESENTED HERE IS 5/8" NICHIIHA PRODUCT, ADJUST ACCORDINGLY FOR OTHER NICHIIHA PRODUCT THICKNESSES.
5. EXPANSION JOINTS ARE REQUIRED WITHIN 2-10' OF THE CORNER.



10 mm CMU WITH FURRING 6' & 10' HORIZONTAL PANEL OUTSIDE CORNER DETAIL - NICHIIHA CORNER KEY TRIM - WRAPPED CORNER

SCALE: 1 1/2" = 1'-0"